

ZONING FOR SCHEMATIC DIAGRAM FIGURE 5-13 (SHEET 1 of 4) (Cont)

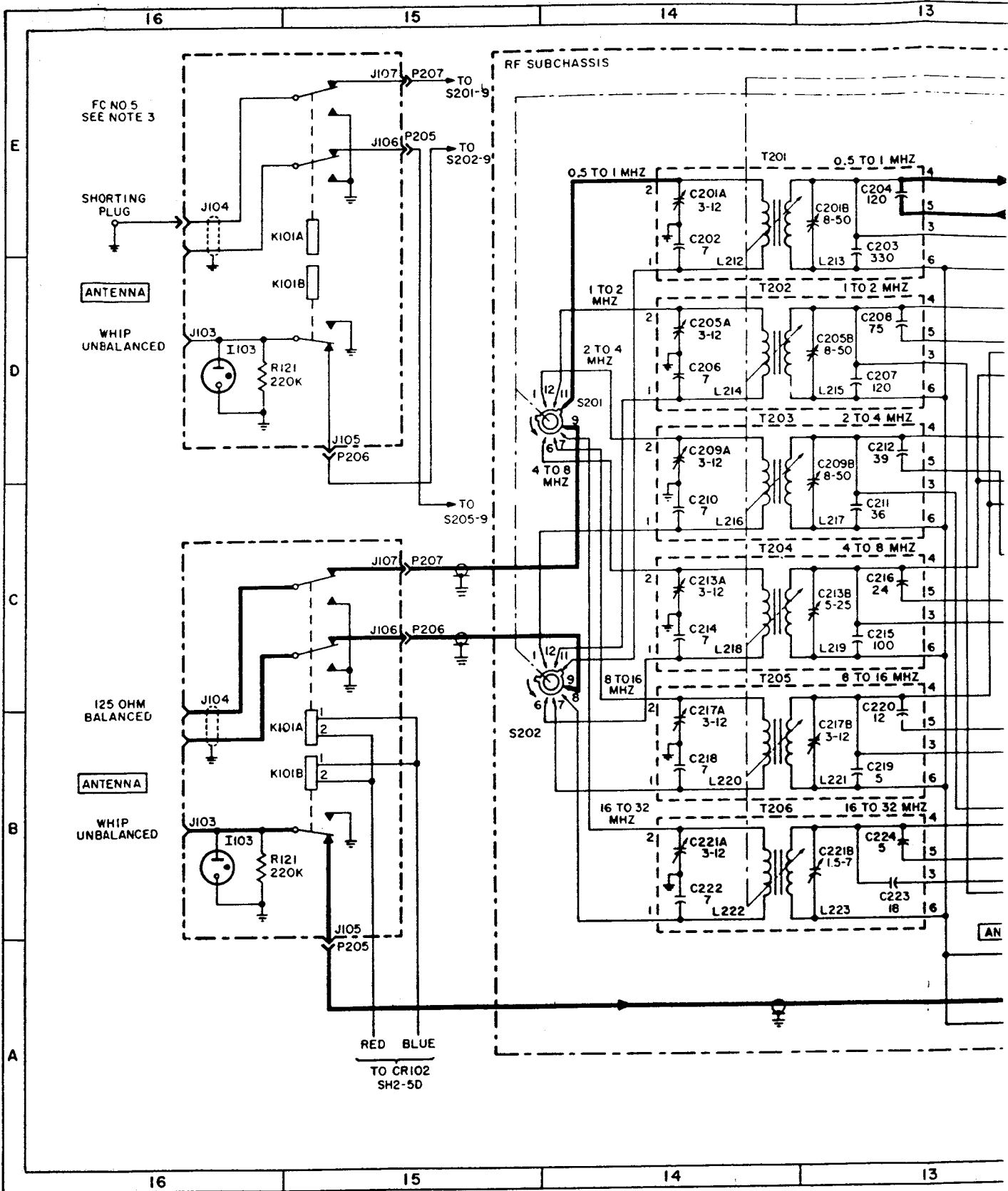
| REF DESIG | LOC | REF DESIG | LOC | REF DESIG | LOC | REF DESIG | LOC |
|--------------|-----|--------------|-----|--------------|-----|--------------|-----|
| R228 | 9C | S205 | 12C | V201 | 9E | Z203-1 | 7D |
| R229 | 9B | S206 | 8D | V202 | 4E | Z203-2 | 6D |
| R231 | 3E | S207 | 5D | V205A | 10B | Z204-1 | 7C |
| R232 | 3C | S208 (front) | 2D | V205B | 9B | Z204-2 | 6C |
| R233 | 9D | S208 (rear) | 2E | V206 | 10B | Z205-1 | 7C |
| R234 | 12B | T201 | 13E | V207 | 4D | Z205-2 | 6C |
| R235 | 11C | T202 | 13D | Y201 | 5D | Z206-1 | 7B |
| S201 | 14D | T203 | 13D | Y203 | 11C | Z206-2 | 6B |
| S202 | 14C | T204 | 13C | Z201-1 | 7E | Z213-1 | 2E |
| S203 (front) | 12B | T205 | 13C | Z201-2 | 6E | Z213-2 | 2D |
| S203 (rear) | 12C | T206 | 13B | Z202-1 | 7D | Z213-3 | 2D |
| S204 | 12D | T207 | 4D | Z202-2 | 6D | | |

GENERAL NOTES:

- A. UNLESS OTHERWISE INDICATED, ELECTRICAL VALUES ARE EXPRESSED IN PICOFARADS, MICROHENRIES, AND OHMS.
- B. INDICATES EQUIPMENT MARKING.

SPECIFIC NOTES:

1. ANTENNA, RF, AND VARIABLE IF COILS ARE TUNED AS FOLLOWS:
 CONTINUOUSLY WITH KILOCYCLE CHANGE , ALL COILS.
 INTERMITTENTLY WITH MEGACYCLE CHANGE . T203 THRU T206, Z203-1 THRU Z206-1, Z203-2 THRU Z206-2, AND Z213-1 THRU Z213-3.
2. REFER TO TABLE 1-9, PRODUCTION MODIFICATIONS.
3. REFER TO TABLE 1-8, FIELD CHANGE DATA, AND FIGURE 5-15.
4. REFER TO FIGURE 5-4, VOLTAGE AND RESISTANCE DIAGRAM.
5. SCHEMATIC SHOWN WITH MEGACYCLE CHANGE SET FOR THE .5 TO 1 MC BAND.



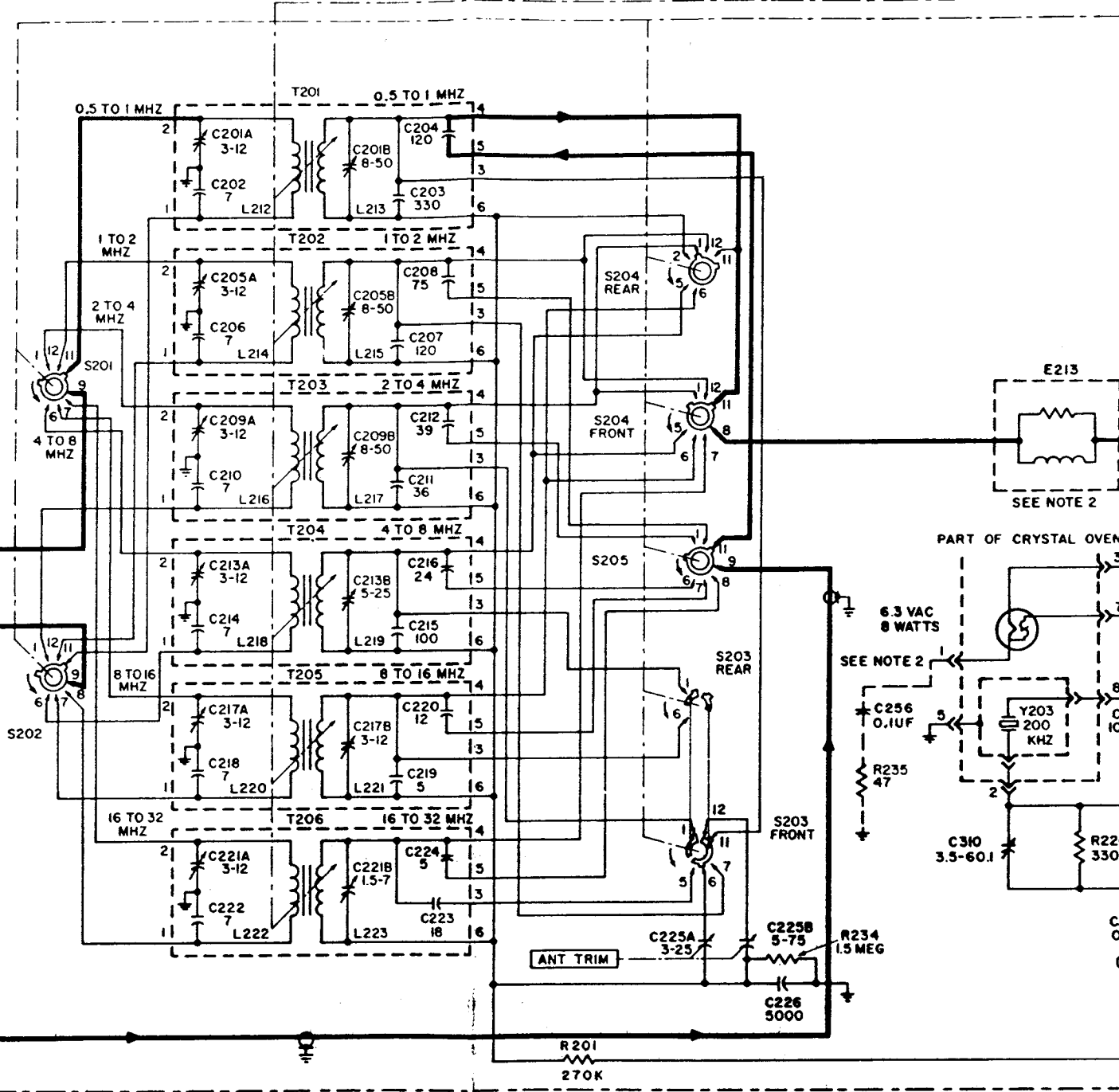
RF SUBCHASSIS

TO S201-9

TO S202-9

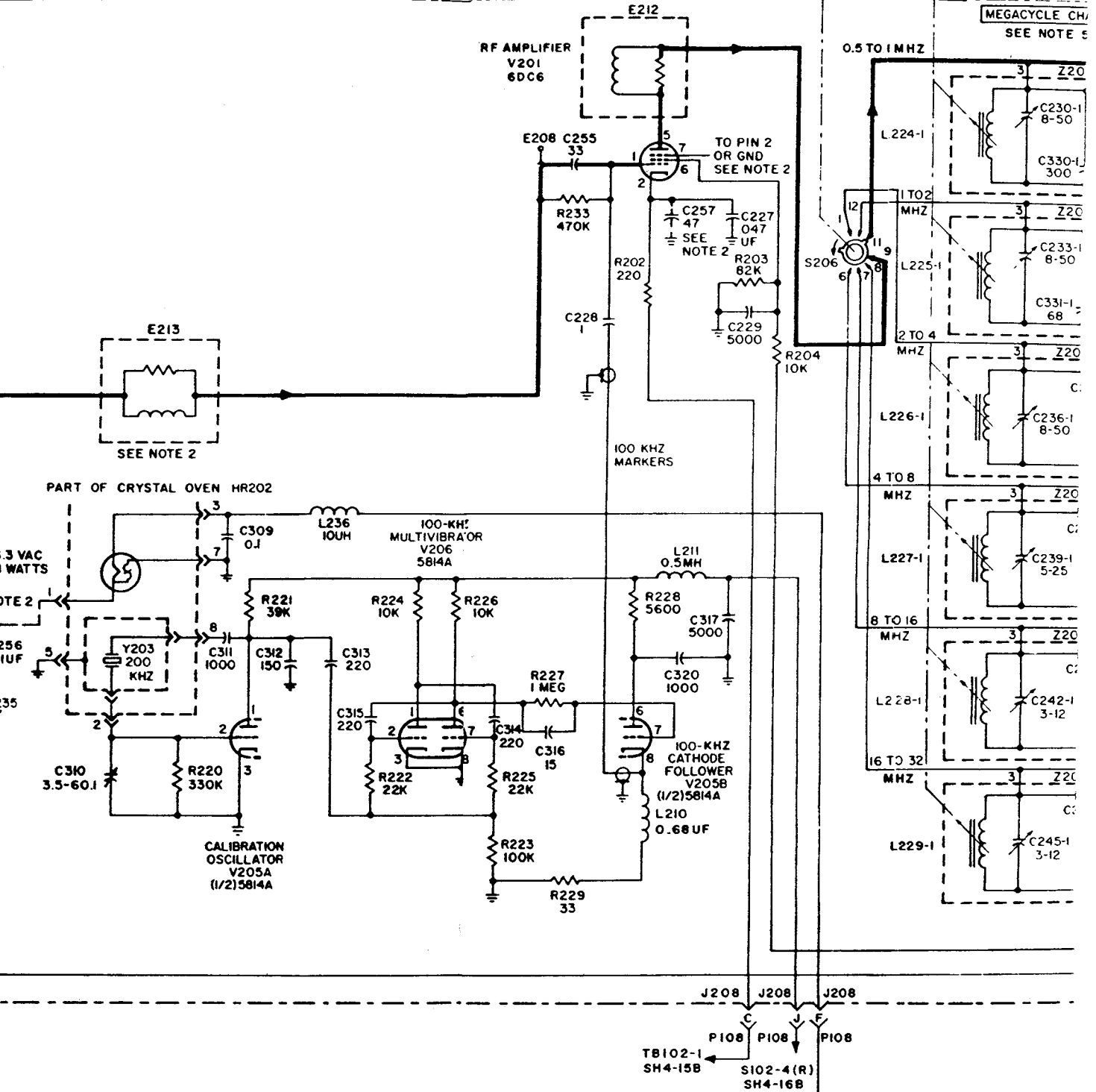
TO S205-9

CAL OS (11)



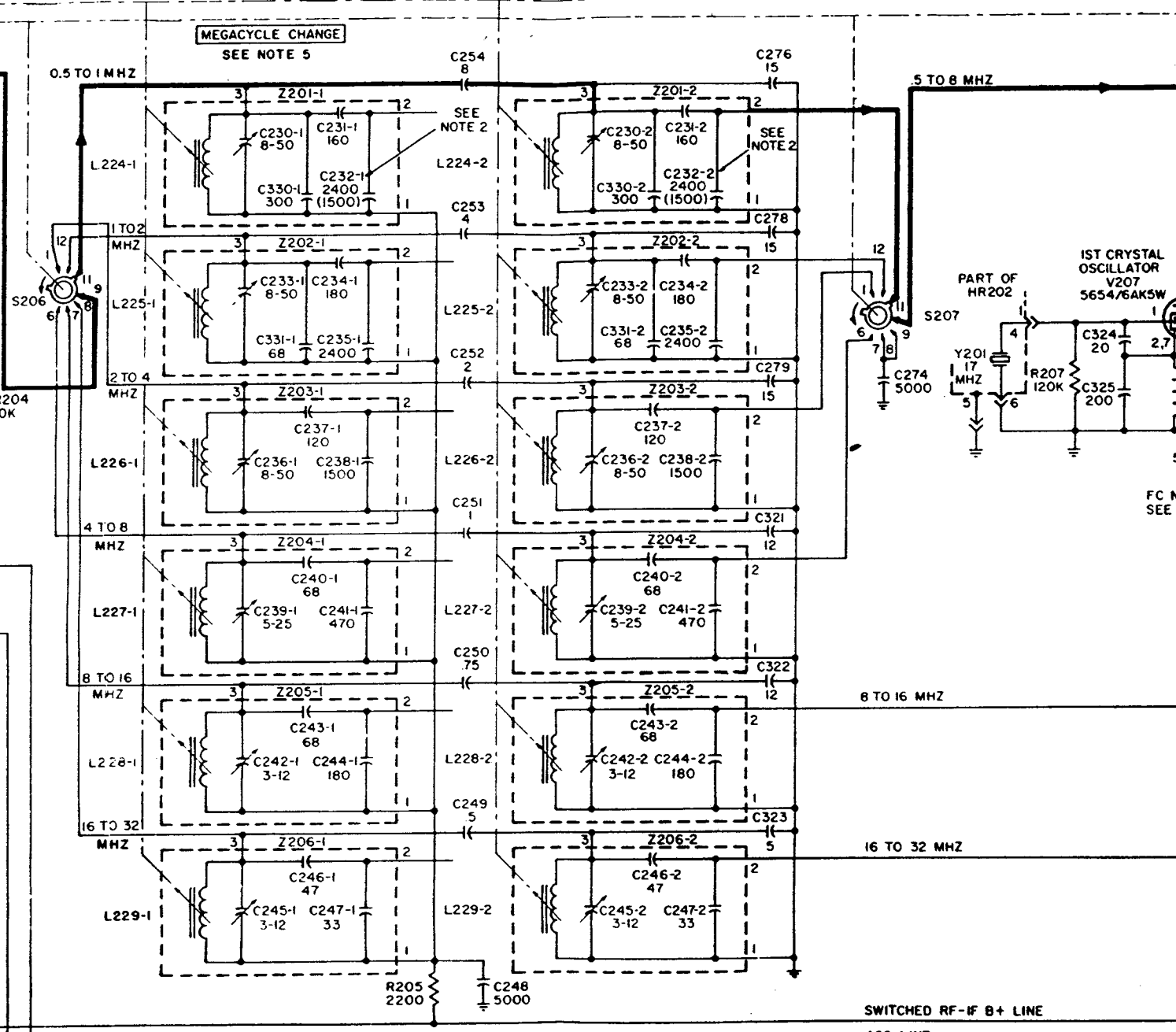
MEGACYCLE CH/

MEGACYCLE CH/
SEE NOTE 5



MEGACYCLE CHANGE AND/OR KILOCYCLE CHANGE SEE NOTE 1

MEGACYCLE CHANGE
SEE NOTE 5



5 TO 8 MHZ

0.5 TO 1 MHZ

1 TO 2 MHZ

2 TO 4 MHZ

4 TO 8 MHZ

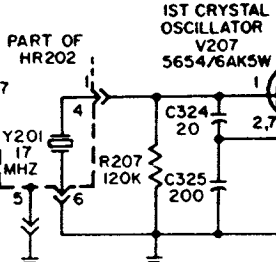
8 TO 16 MHZ

8 TO 16 MHZ

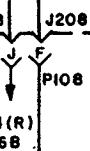
16 TO 32 MHZ

SWITCHED RF-IF B+ LINE

AGC LINE



FC N
SEE



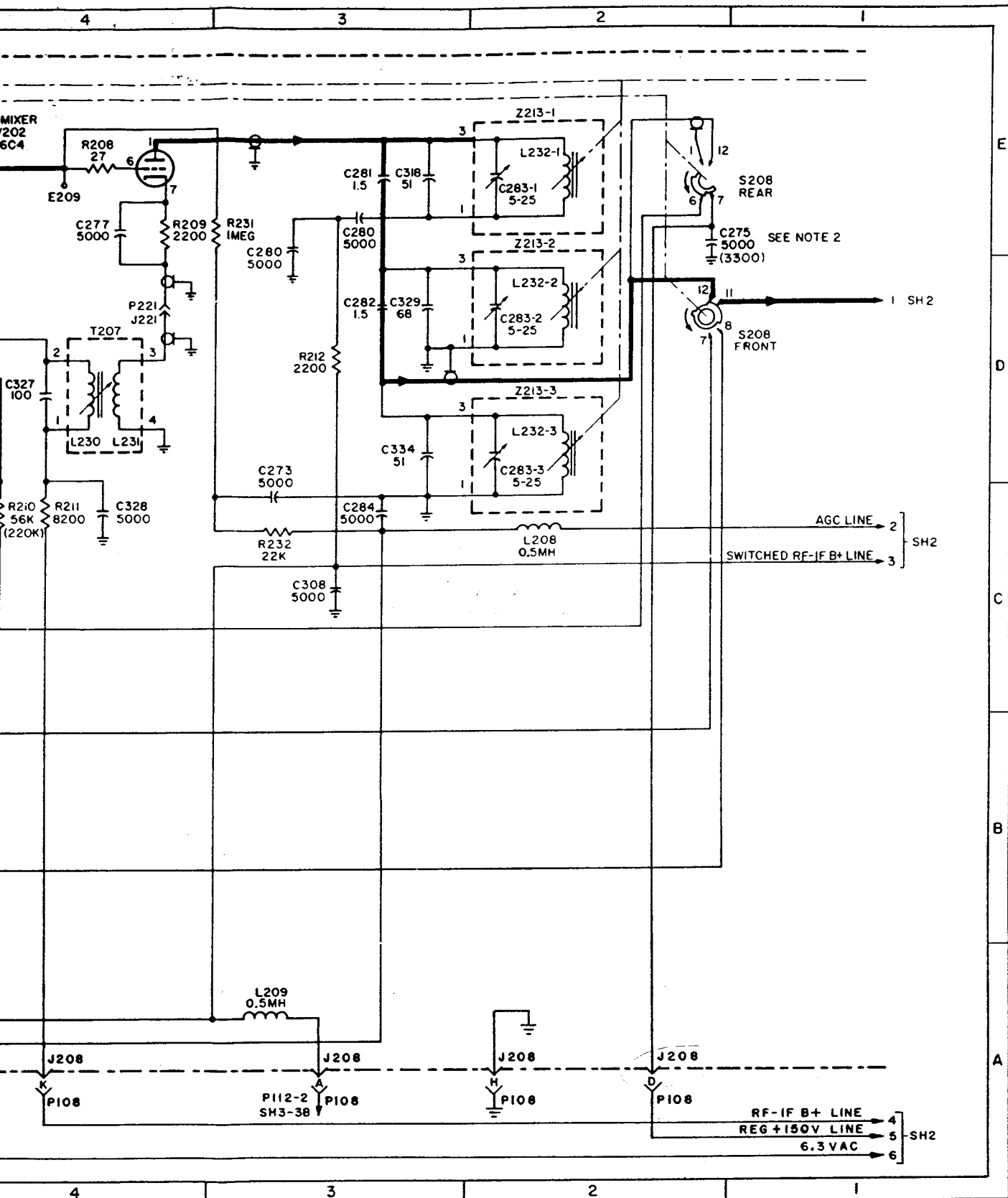


Figure 5-13. Schematic Diagram
(Sheet 1 of 4)

ZONING FOR SCHEMATIC DIAGRAM FIGURE 5-13 (SHEET 2 of 4) (Cont)

| REF DESIG | LOC | REF DESIG | LOC | REF DESIG | LOC | REF DESIG | LOC |
|--------------|-----|--------------|-----|--------------|----------|--------------|----------|
| Y405 | 2C | Y409 | 2D | Y413 | 1C | Z216-2 | 13D, 14D |
| Y406 | 1C | Y410 | 2D | Y414 | 1D | Z216-3 | 13D, 14D |
| Y407 | 2C | Y411 | 2D | Y415 | 1D | Y702 | 11C, 12C |
| Y408 | 1C | Y412 | 2D | Z216-1 | 13E, 14E | | |

GENERAL NOTES:

- A. UNLESS OTHERWISE INDICATED, ELECTRICAL VALUES ARE EXPRESSED IN PICO FARADS, MICROHENRIES, AND OHMS.
- B. INDICATES EQUIPMENT MARKING.

SPECIFIC NOTES:

1. ANTENNA, RF, AND VARIABLE IF COILS ARE TUNED AS FOLLOWS:

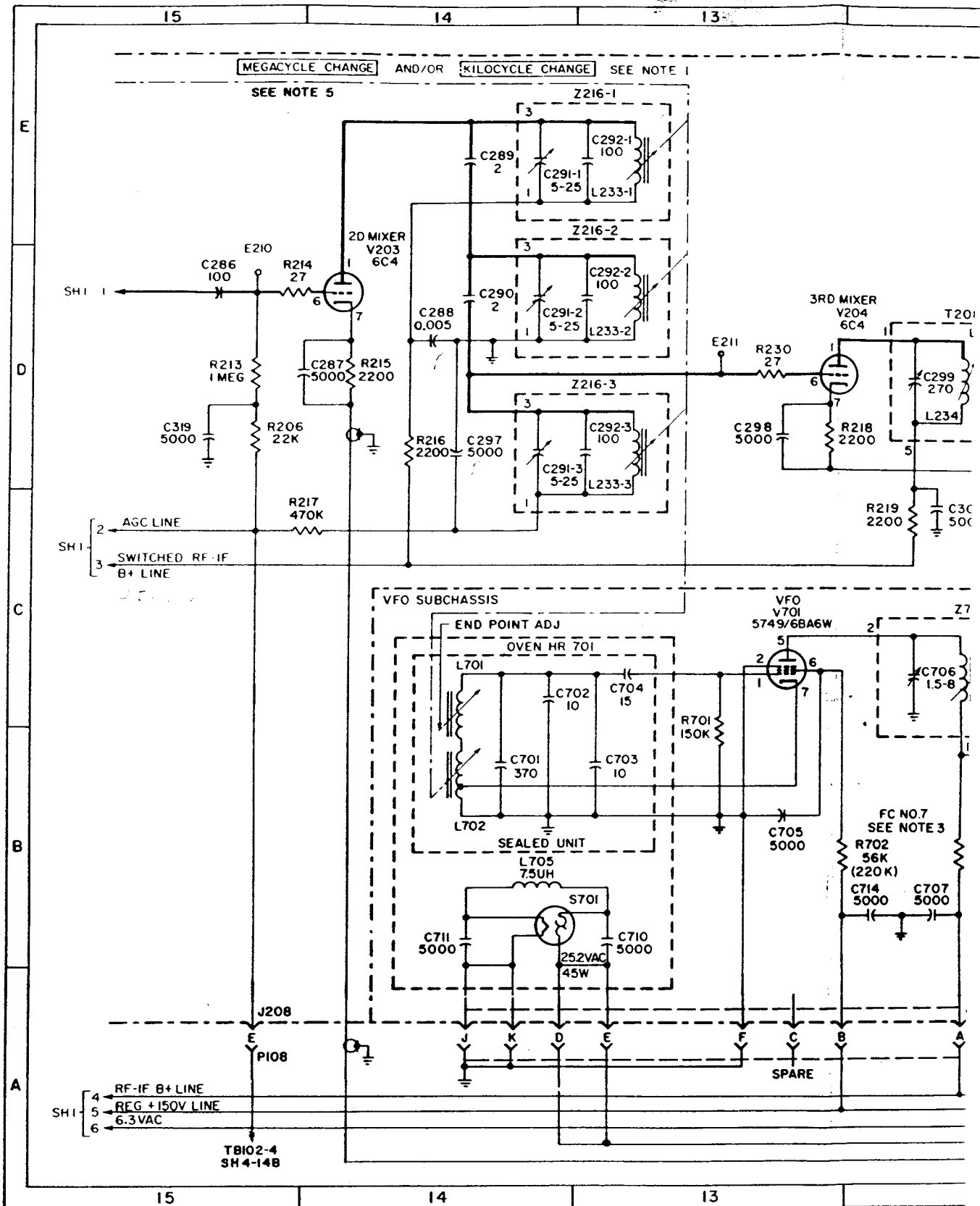
CONTINUOUSLY WITH KILOCYCLE CHANGE, ALL COILS.

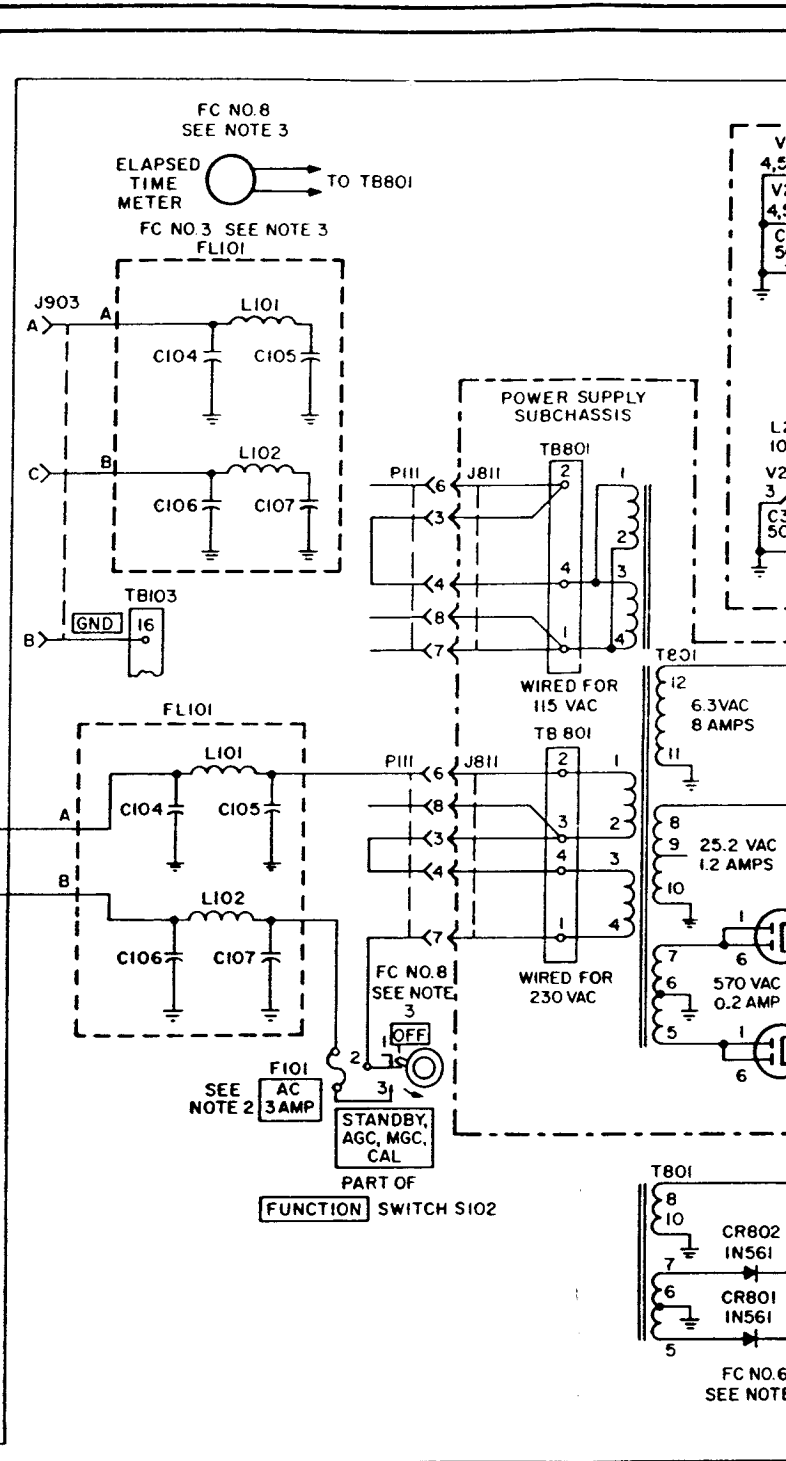
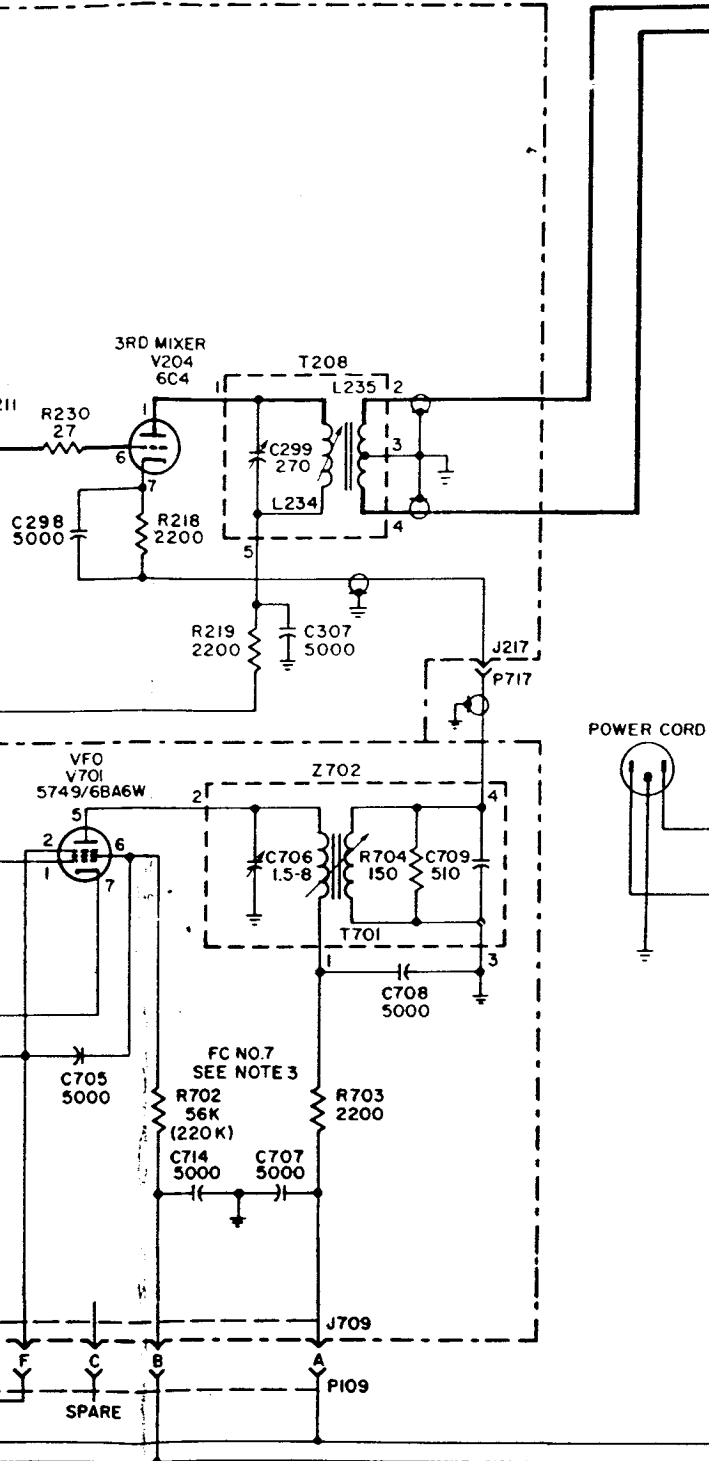
INTERMITTENTLY WITH MEGACYCLE CHANGE, T203 THRU T206, Z203-1 THRU Z206-1, Z203-2 THRU Z206-2, AND Z213-1 THRU Z213-3.

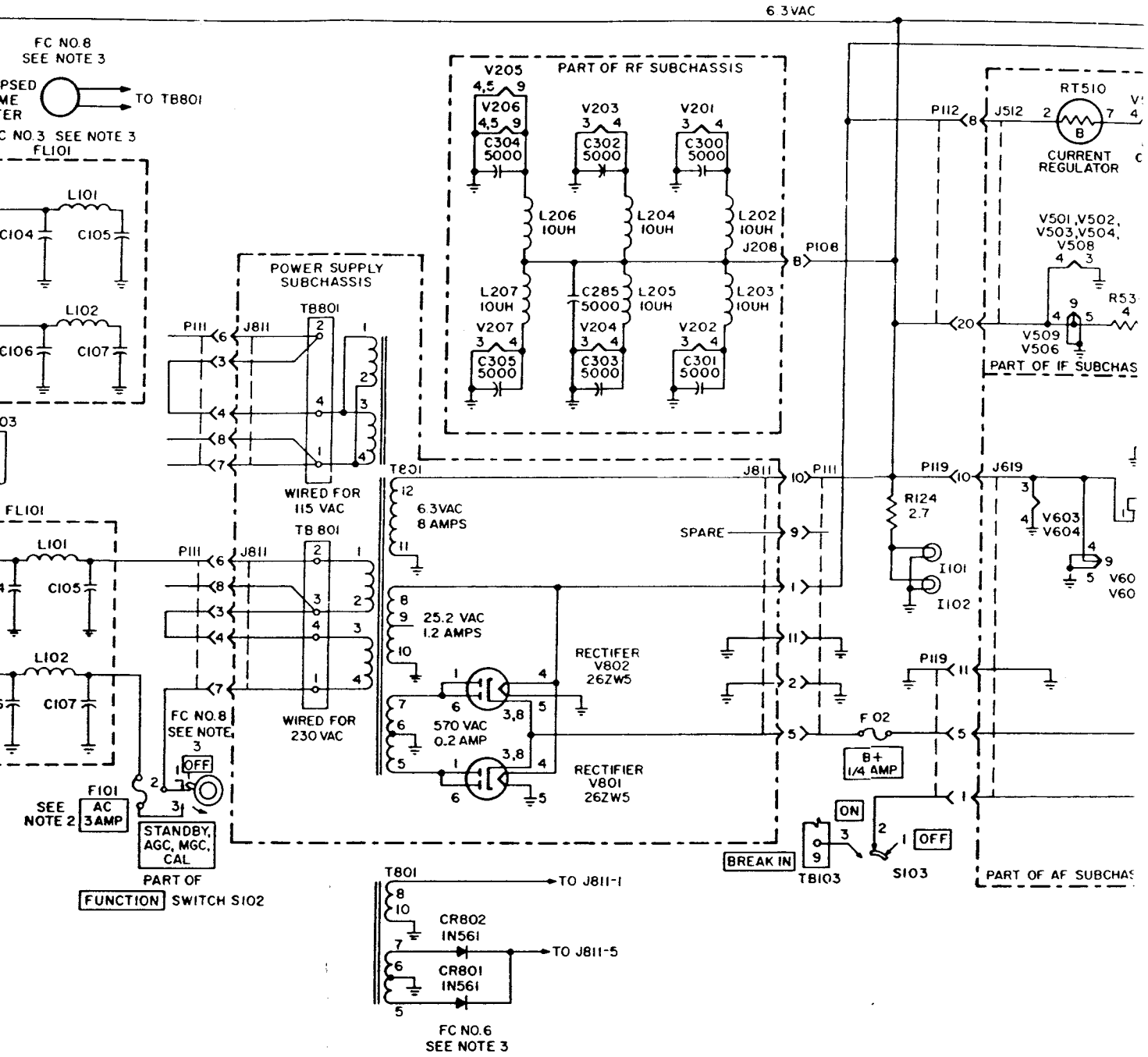
2. REFER TO TABLE 2-3 FOR FUSE VALUES.
3. REFER TO TABLE 1-8, FIELD CHANGE DATA.
4. REFER TO FIGURES 5-4, 5-5, 5-7, 5-8, AND 5-9 VOLTAGE AND RESISTANCE DIAGRAMS.
5. SCHEMATIC SHOWN WITH MEGACYCLE CHANGE SET FOR THE .5 TO 1 MC BAND.

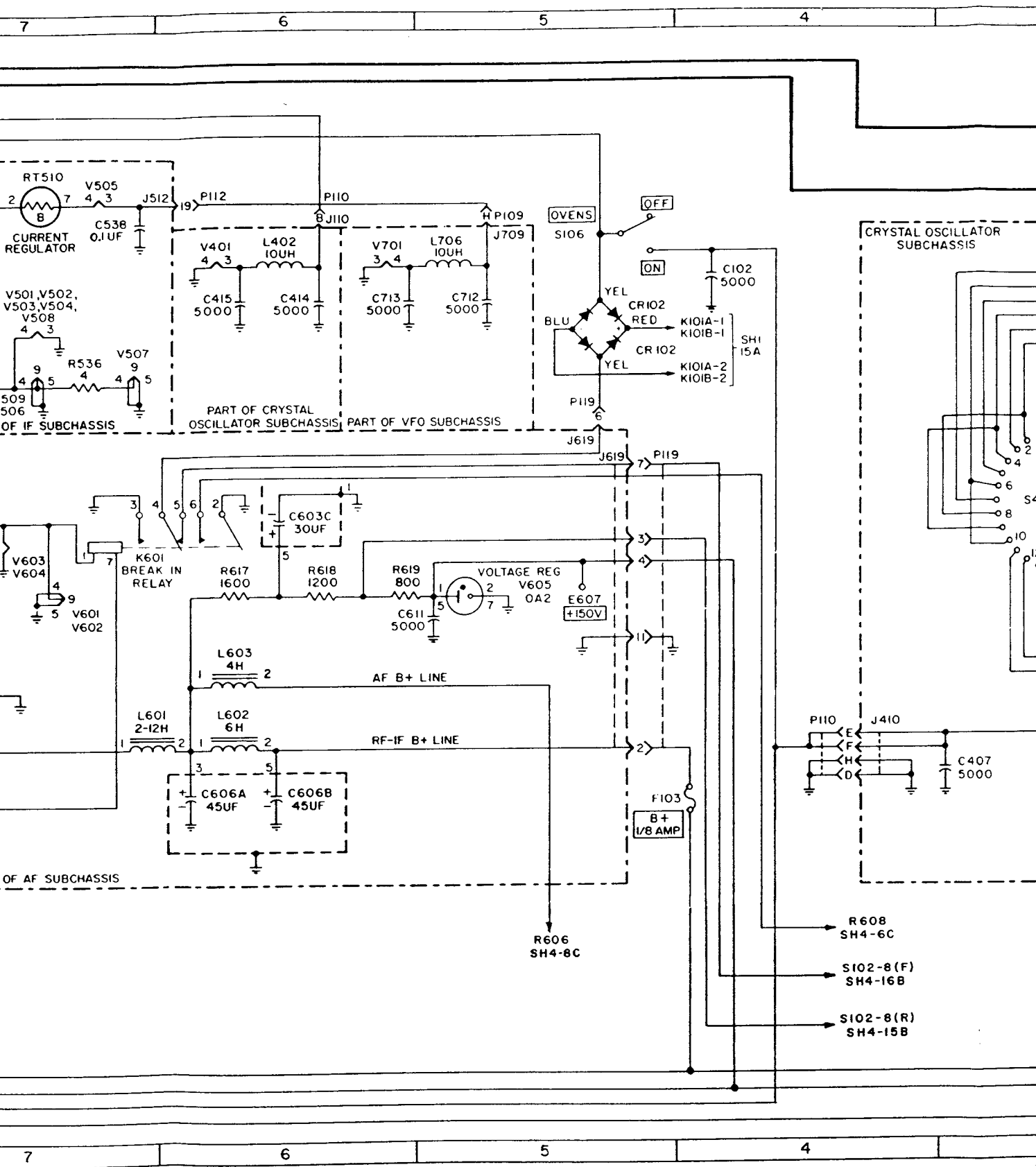
14D
14D
12C

3,









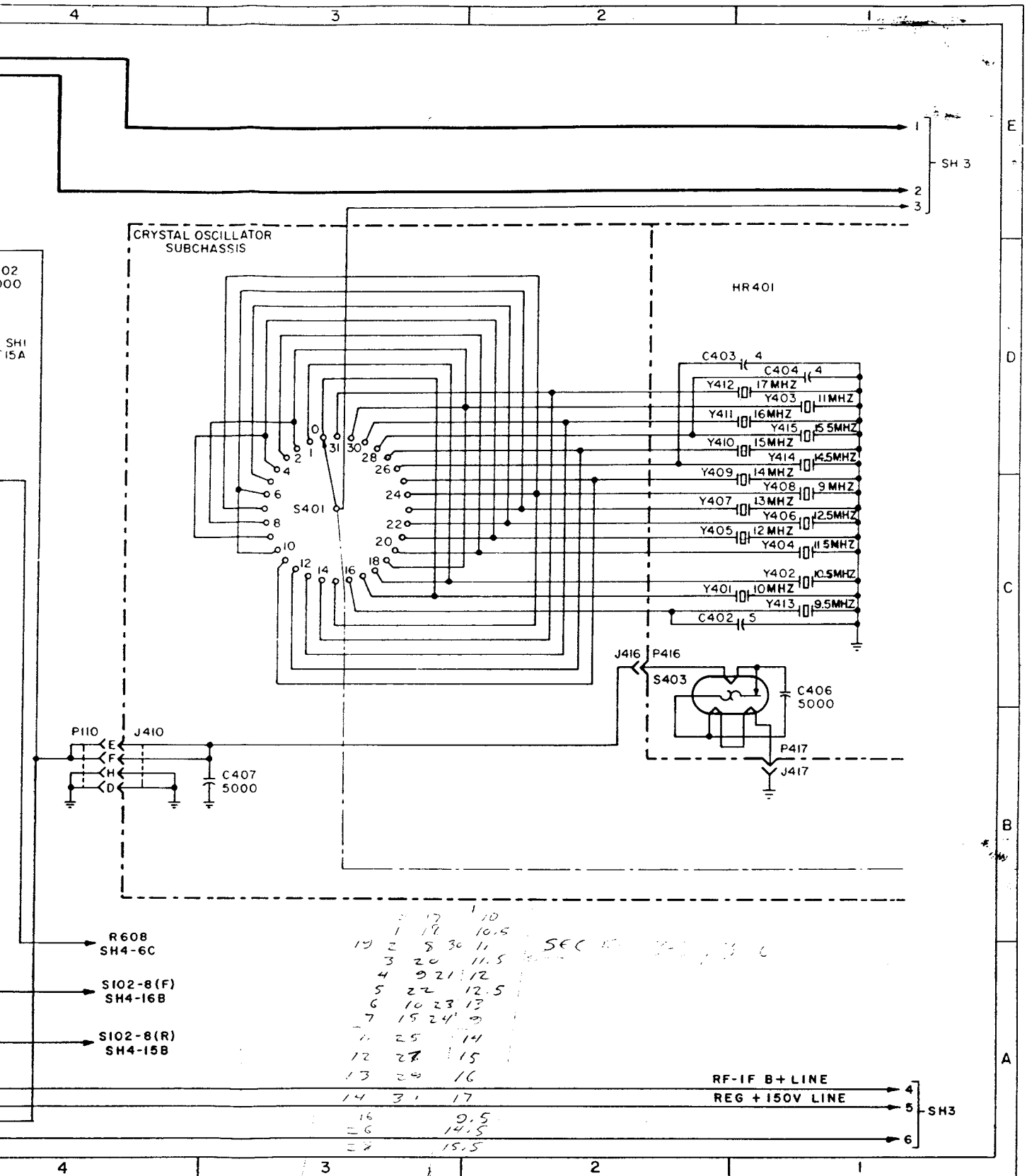


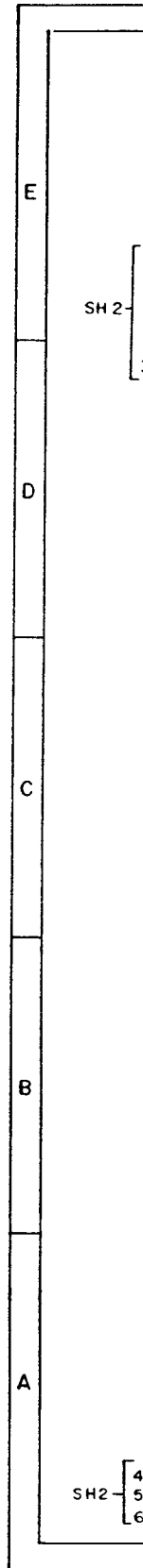
Figure 5-13. Schematic Diagram (Sheet 2 of 4)

GENERAL NOTES:

- A. UNLESS OTHERWISE INDICATED, ELECTRICAL VALUES ARE EXPRESSED IN PICO FARADS, MICROHENRIES, AND OHMS.
- B. INDICATES EQUIPMENT MARKING.

SPECIFIC NOTES:

1. RESISTORS R502 AND R503 SELECTED FOR OPTIMUM BANDPASS.
R502 SELECTED WITHIN RANGE OF 33K TO 68K.
R503 SELECTED WITHIN RANGE OF 560 TO 2700.
2. REFER TO TABLE 1-9, PRODUCTION MODIFICATIONS, AND FIGURE 3-6.
3. REFER TO FIGURES 5-5 AND 5-6, VOLTAGE AND RESISTANCE DIAGRAMS.
4. SCHEMATIC SHOWN WITH MEGACYCLE CHANGE SET FOR THE .5 TO 1 MC BAND.

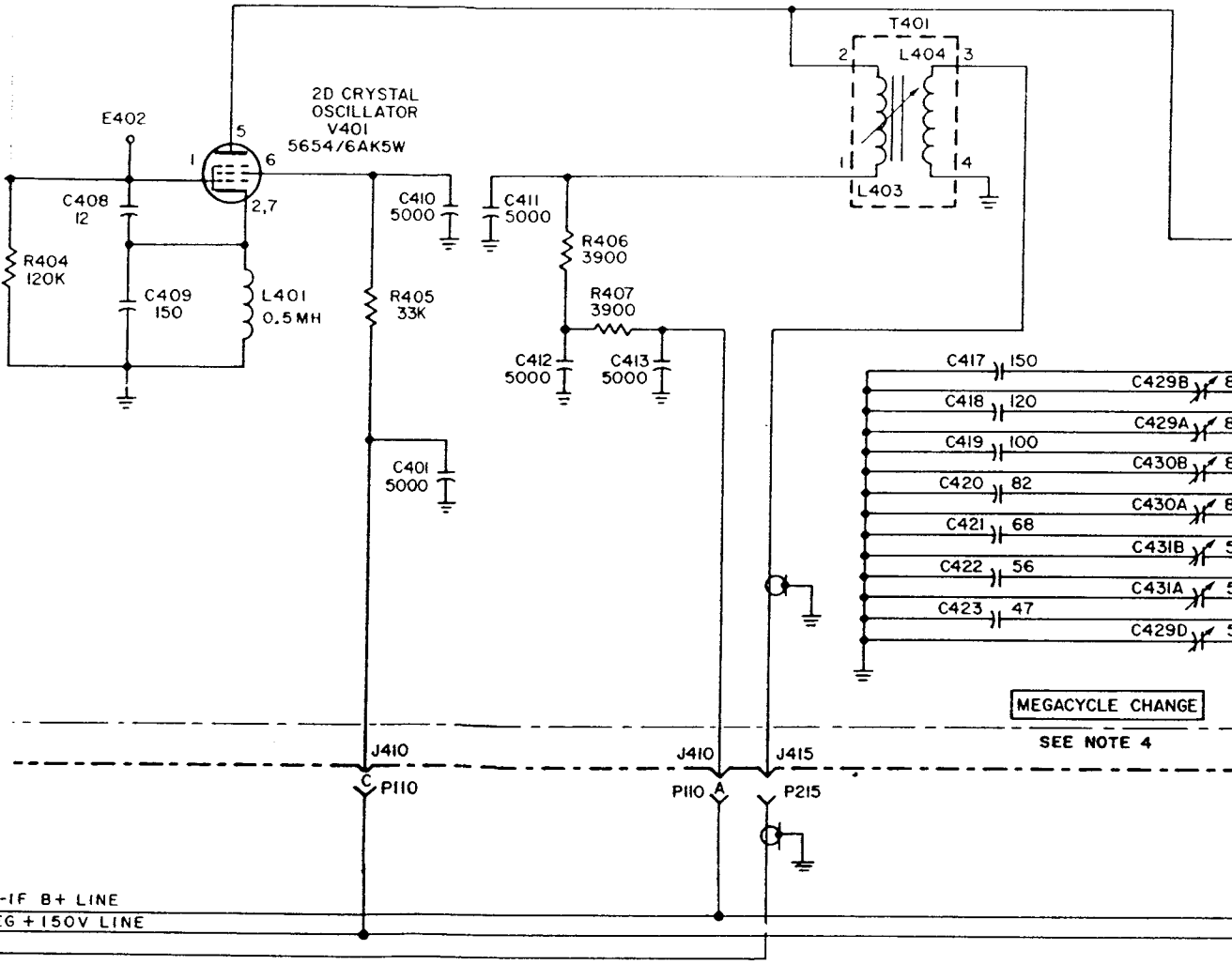
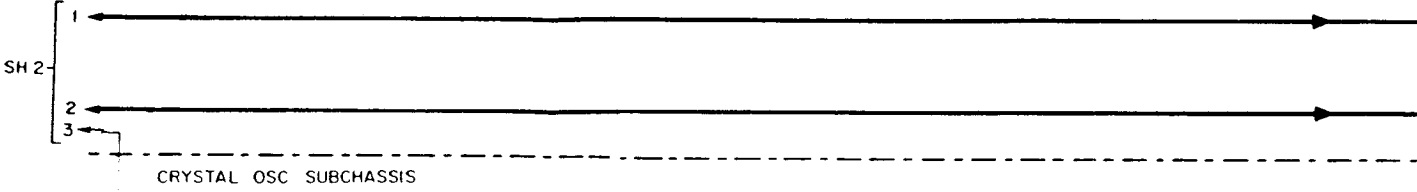


20

19

18

17

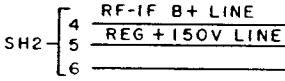


20

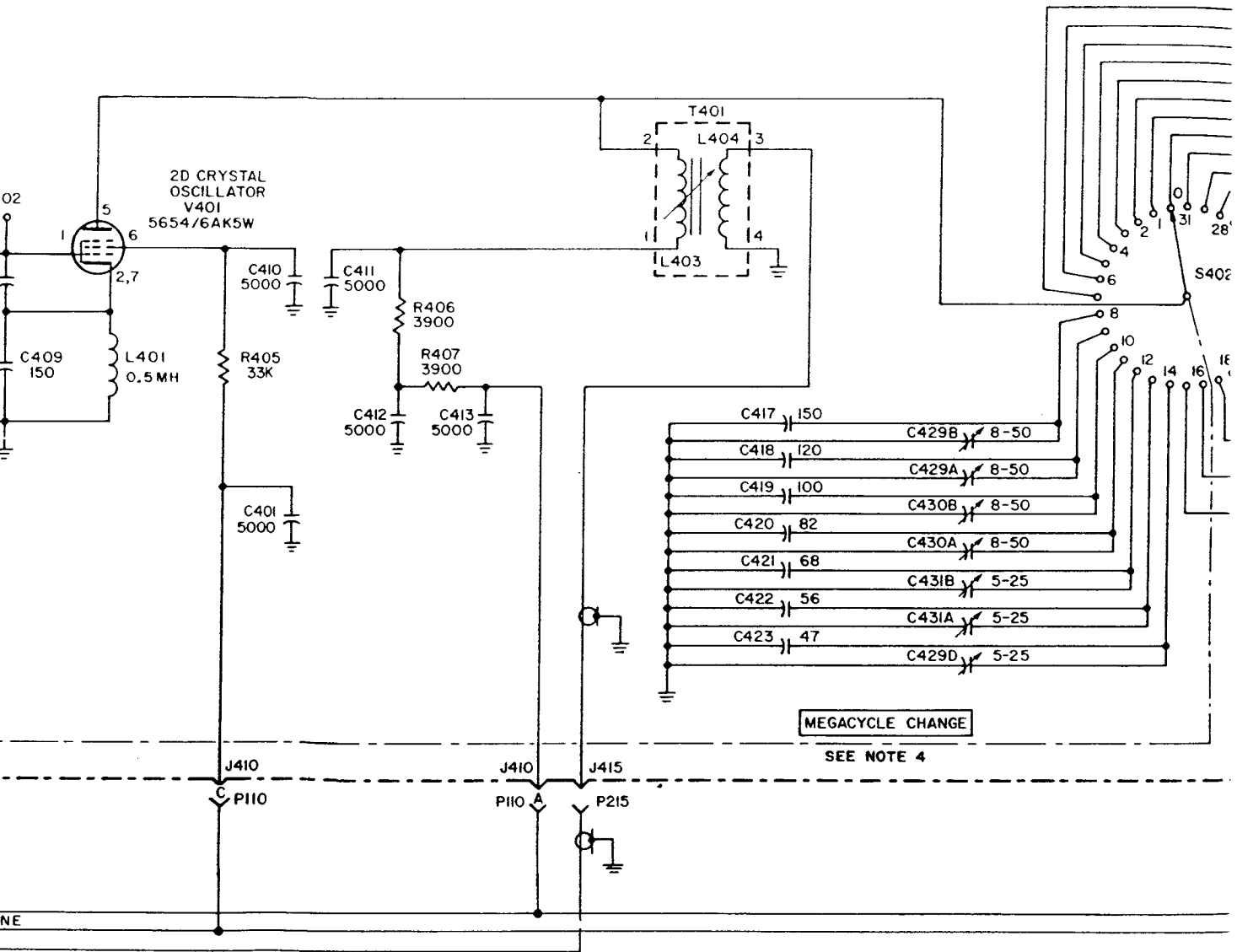
19

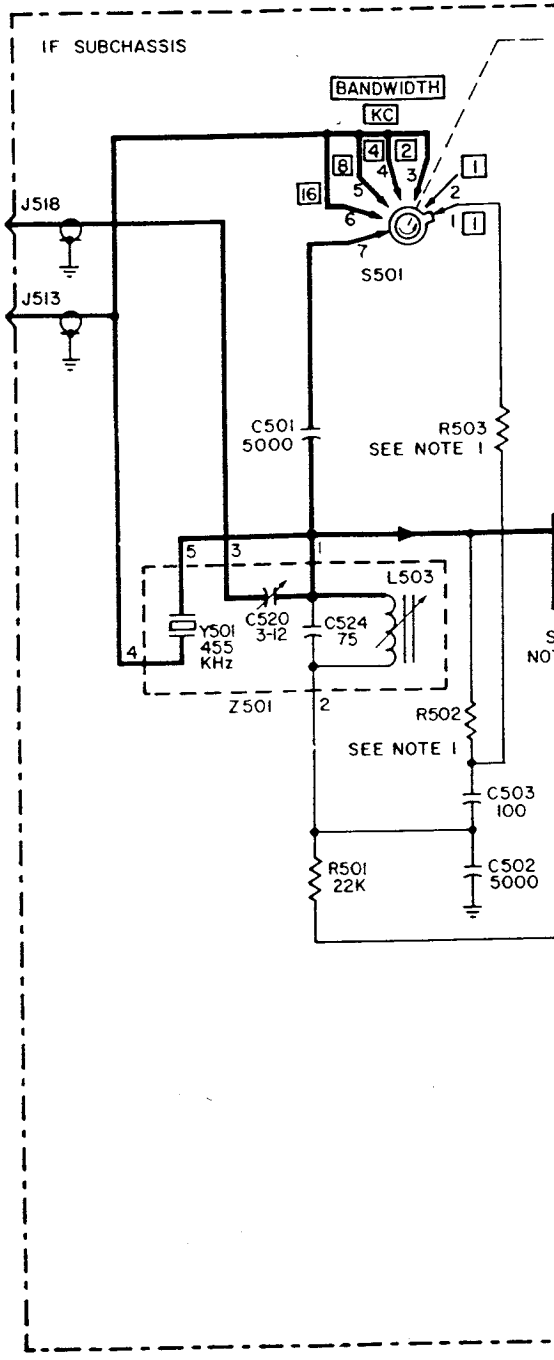
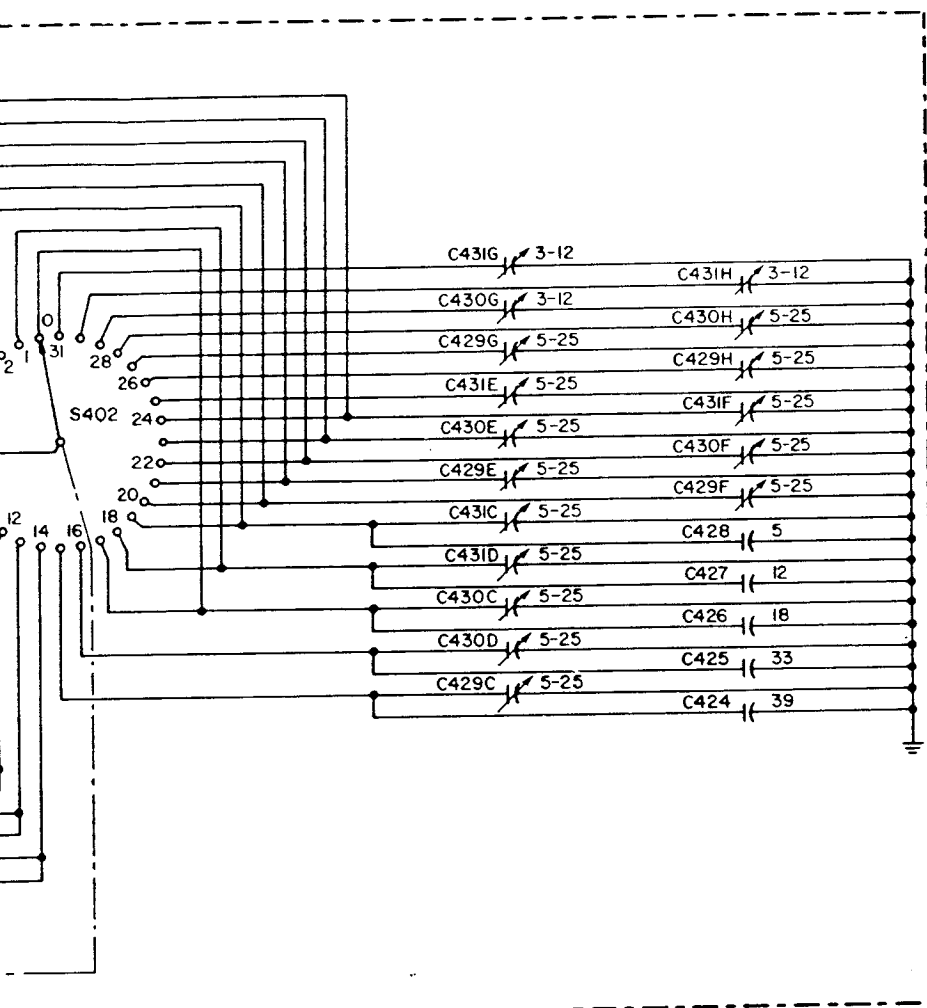
18

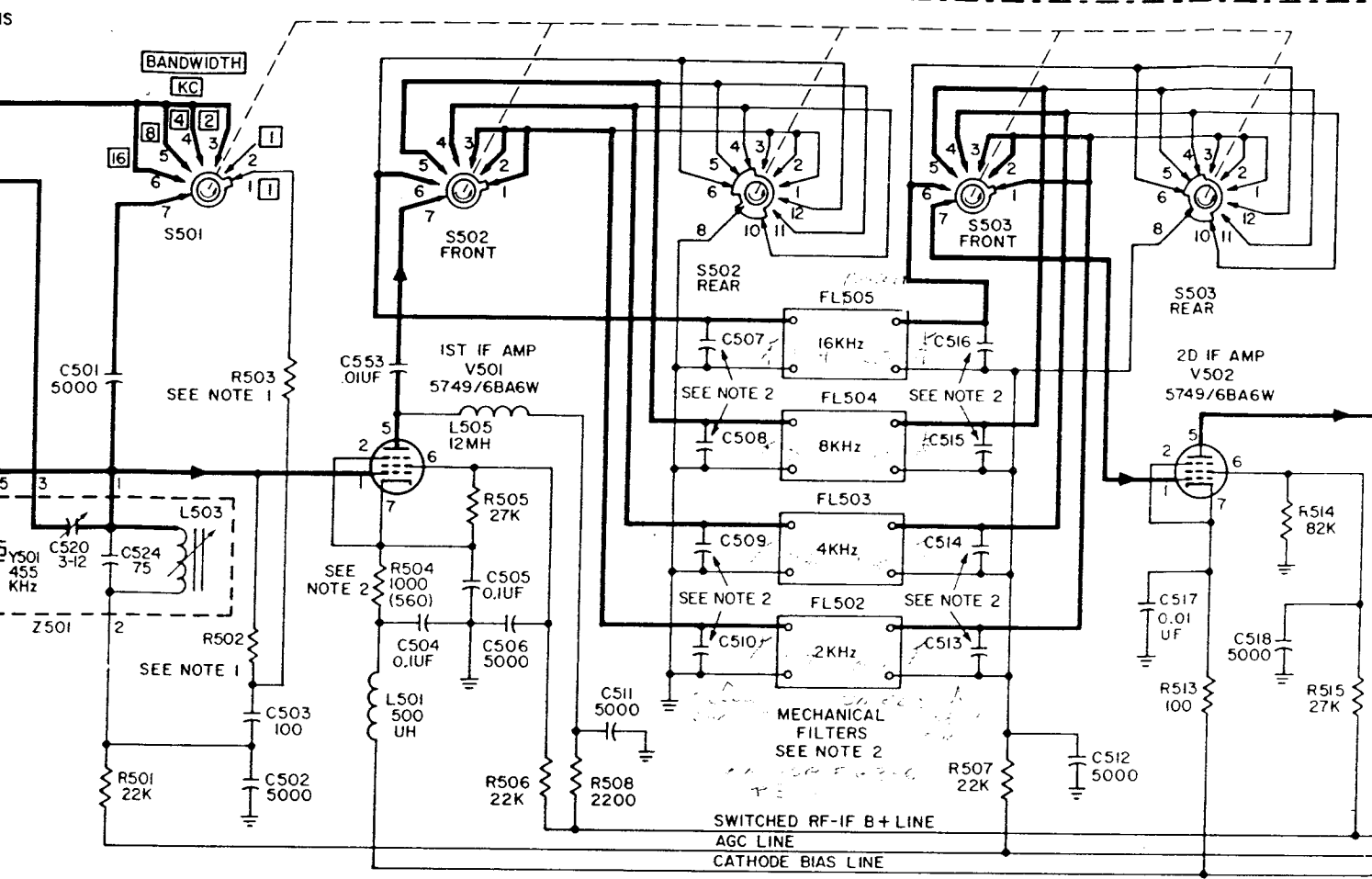
17



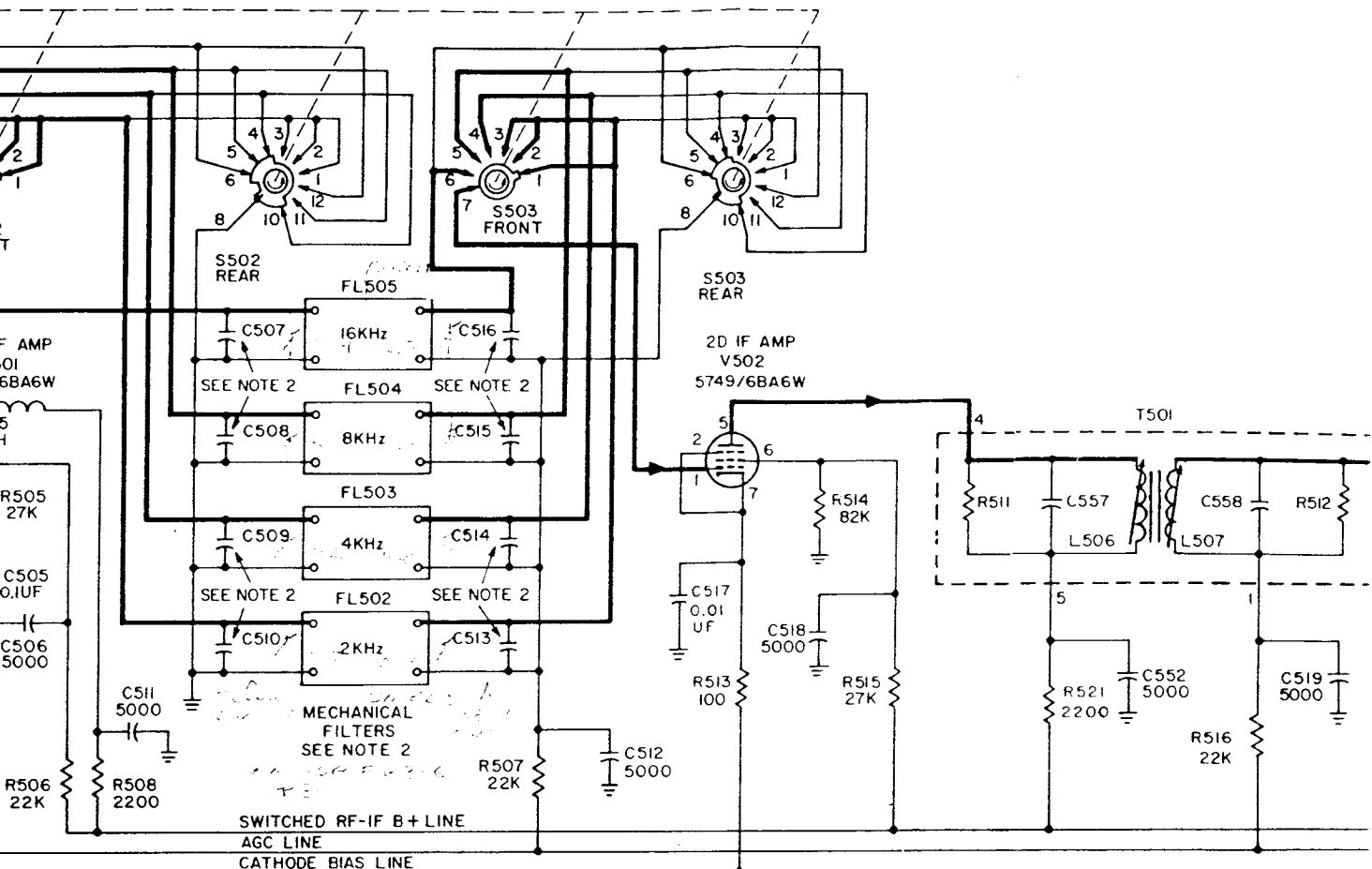
OSC SUBCHASSIS

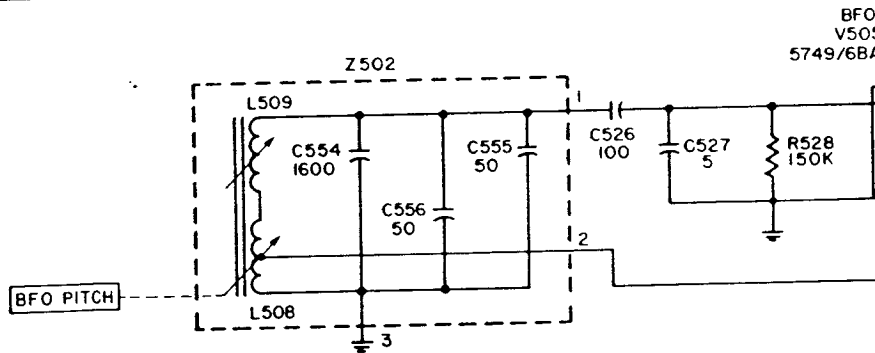
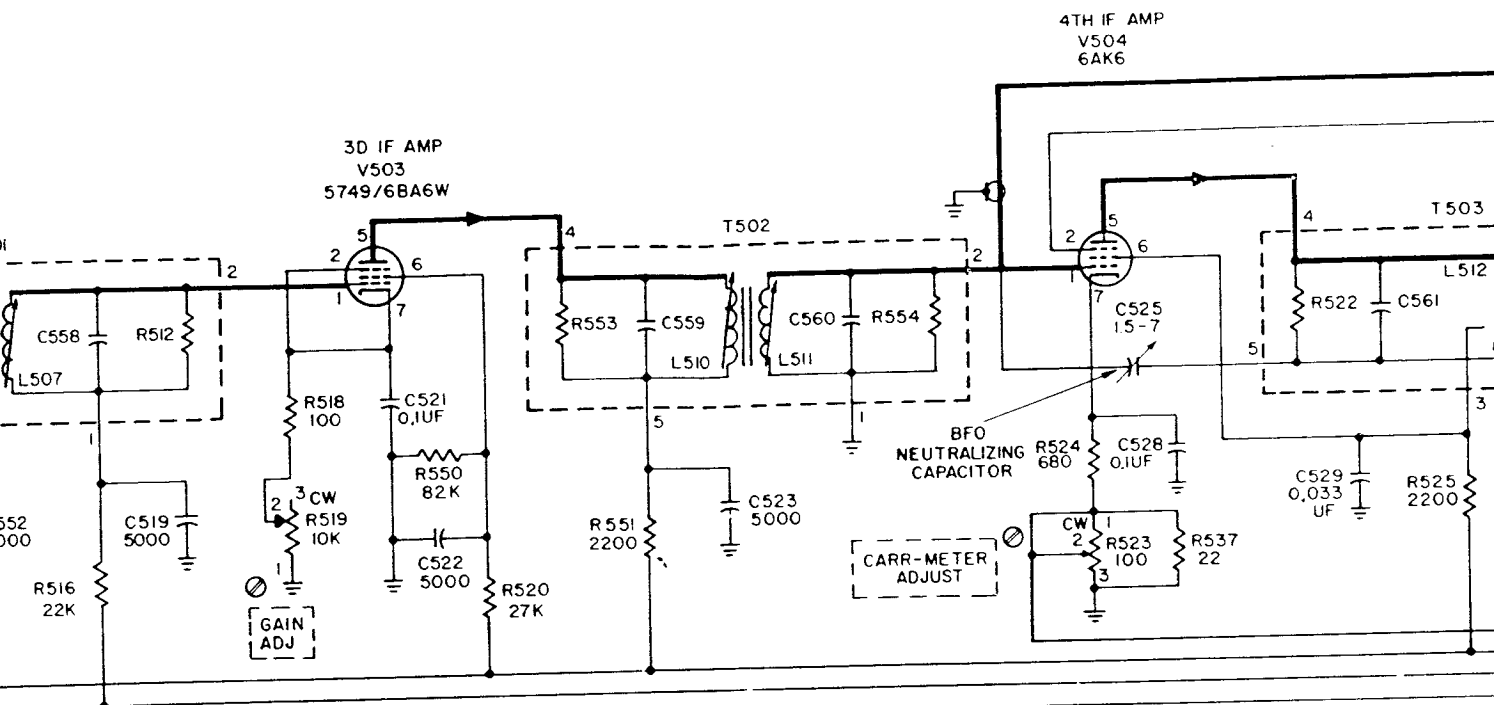


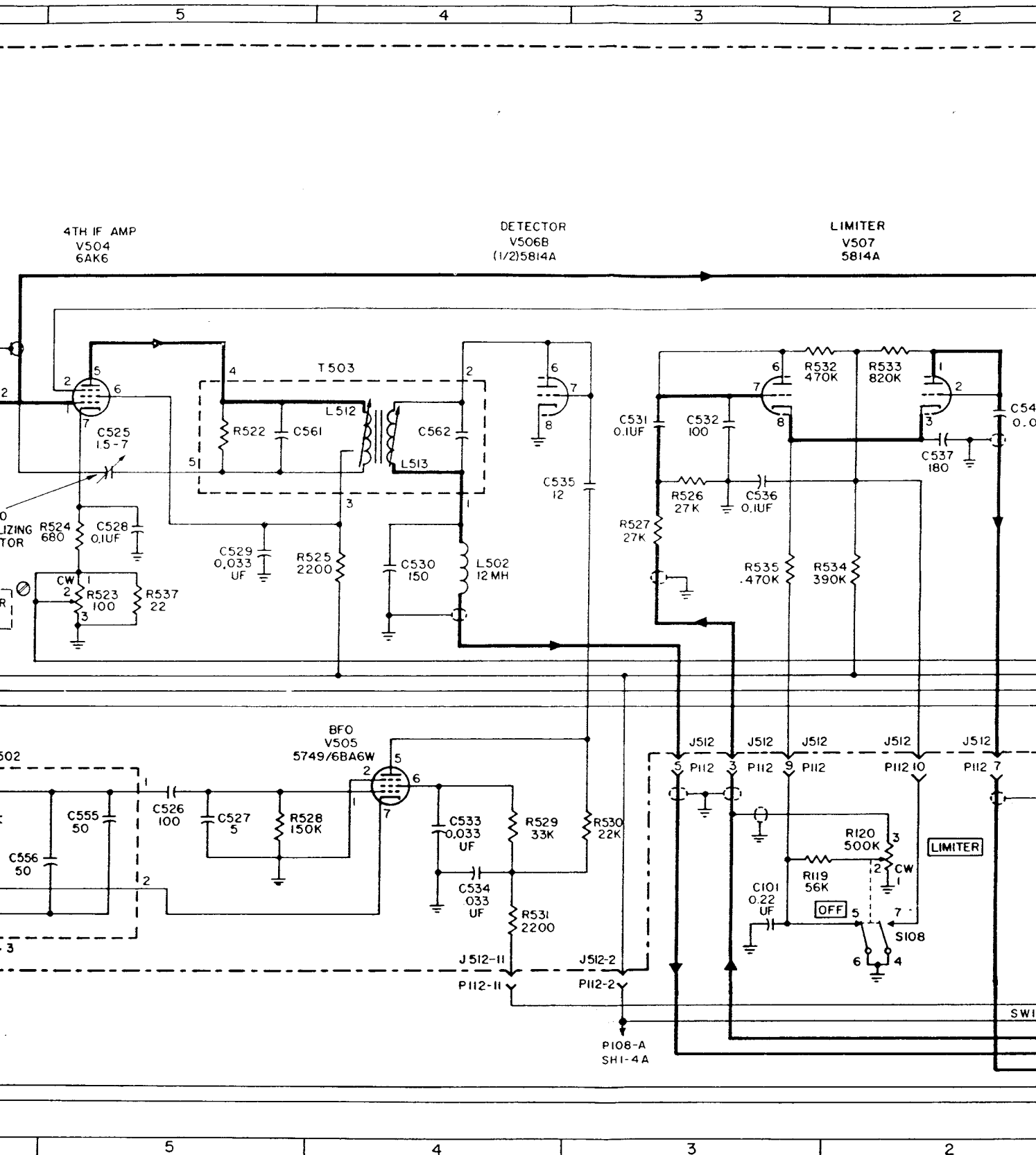




Handwritten notes:
 C507 16KHz
 C508 8KHz
 C509 4KHz
 C510 .2KHz
 MECHANICAL FILTERS
 SEE NOTE 2
 R507 22K
 C512 5000







Figure

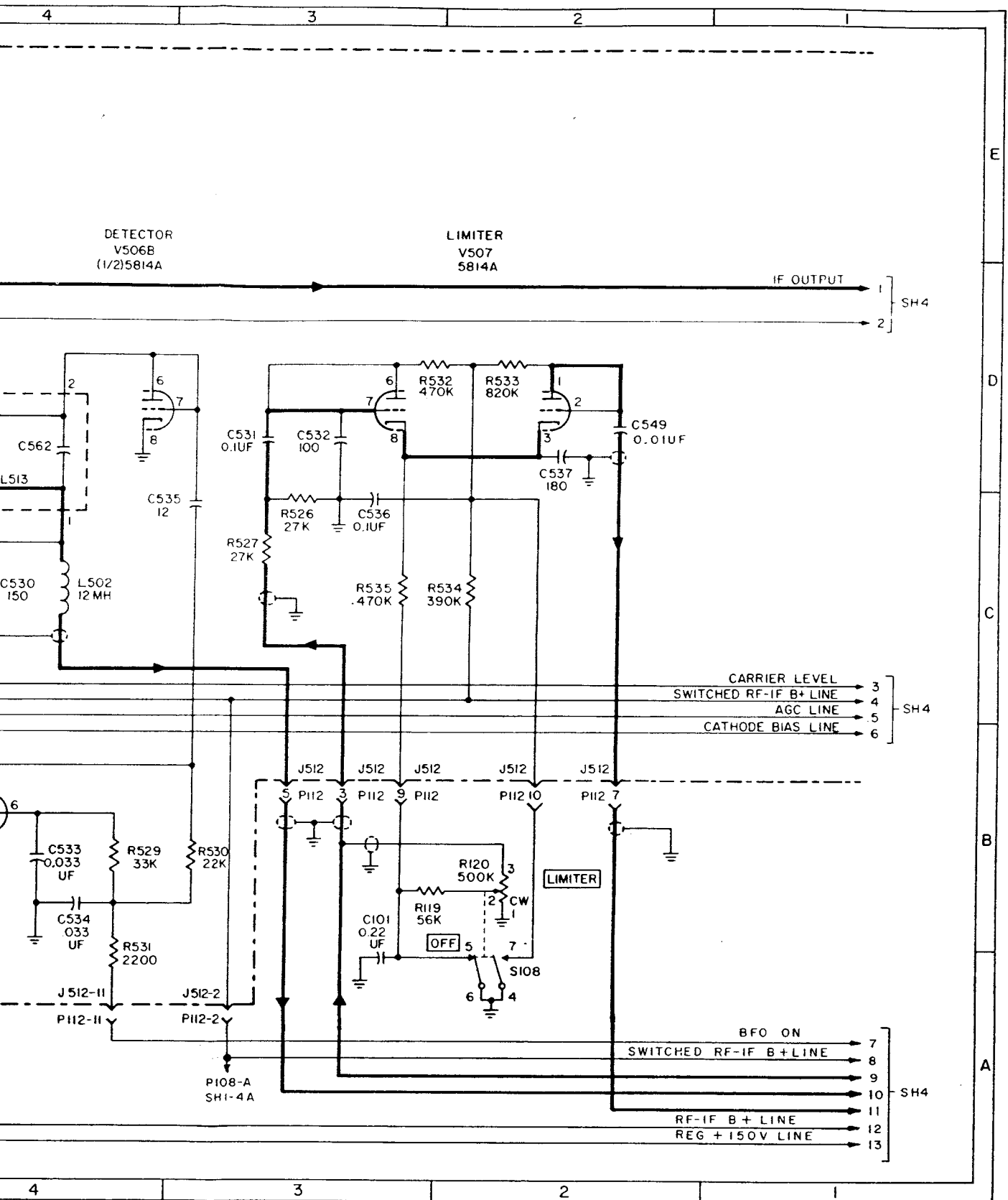


Figure 5-13. Schematic Diagram
(Sheet 3 of 4)

ZONING FOR SCHEMATIC DIAGRAM FIGURE 5-13 (SHEET 4 of 4)

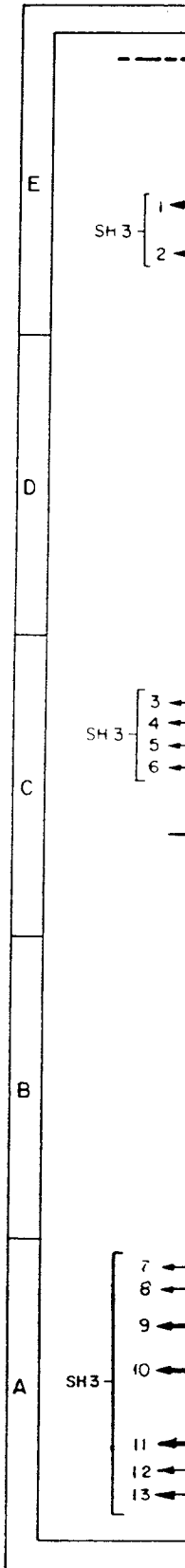
| REF DESIG | LOC | REF DESIG | LOC | REF DESIG | LOC | REF DESIG | LOC |
|--------------|----------|--------------|----------|--------------|-----|--------------|---------|
| C539 | 12C | J620 | 3B, 3C | R116 | 4A | R620 | 6B |
| C540 | 12C | | 9B, 9D | R117 | 3A | R621 | 5B |
| C541 | 12D | J904 | 6E | R118 | 3B | R622 | 5B |
| C542 | 17D | L504 | 13C | R538 | 12D | R623 | 4A |
| C543 | 17D | L514 | 15D | R539 | 13D | R624 | 5B |
| C544 | 16D | M101 | 2B | R540 | 17D | R626 | 5B |
| C545 | 16C | M102 | 13B | R541 | 16D | R627 | 7C |
| C546 | 15D | P112 | 12D, 13C | R542 | 15C | S101 | 17B |
| C547 | 14D | | 14C, 15C | R543 | 16D | S102 (front) | 16B |
| C548 | 13D | | 16C, 17C | R544 | 14D | S102 (rear) | 15B |
| C551 | 13D | P114 | 12C | R545 | 15D | S104 | 10C |
| C563 | 16D | P116 | 11C | R546 | 15D | S105 | 3A |
| C601 | 8D | P119 | 3D, 6E | R547 | 14D | S107 | 11E |
| C602 | 8D | P120 | 3B, 3C | R548 | 13D | T601 | 4D |
| C603A | 8B | | 6E, 9B | R549 | 13D | T602 | 4B |
| C603B | 8B | | 9D, 9E | R552 | 12C | TB102 | 2D, 13A |
| C604 | 6C | R101 | 3D | R601 | 9D | | 13B |
| C605 | 5D | R102 | 2C | R602 | 8D | TB103 | 2B, 13B |
| C607 | 6B | R103 | 14B | R603 | 9C | V506A | 13D |
| C608 | 5B | R104 | 10C | R604 | 8C | V508 | 16D |
| C609 | 8C | R105 | 10C | R605 | 8C | V509A | 15D |
| C612 | 9D | R106 | 2B | R606 | 8C | V509B | 12D |
| CR101 | 13B | R107 | 2A | R607 | 7C | V601A | 8C |
| FL601 | 6C | R108 | 2A | R608 | 7C | V601B | 7C |
| J102 | 2D | R109 | 3B | R609 | 6C | V602A | 5C |
| J116 | 11C | R110 | 3B | R610 | 5C | V602B | 5B |
| J512 | 12D, 13C | R111 | 2B | R611 | 5C | V603 | 4C |
| | 14C, 15C | R112 | 2B | R612 | 5C | V604 | 4B |
| | 16C, 17C | R113 | 2C | R613 | 5C | Z503 | 16D |
| J514 | 12C | R114 | 2B | R614 | 4C | | |
| J619 | 3D, 6D | R115 | 2B | R615 | 4C | | |

GENERAL NOTES:

- A. UNLESS OTHERWISE INDICATED, ELECTRICAL VALUES ARE EXPRESSED IN PICOFARADS, MICROHENRIES, AND OHMS.
- B. INDICATES EQUIPMENT MARKING.

SPECIFIC NOTES:

1. FUNCTION SWITCH S102 SHOWN IN OFF POSITION
2. REFER TO TABLE 1-9, PRODUCTION MODIFICATIONS.
3. REFER TO TABLE 1-8, FIELD CHANGE DATA.
4. AUDIO RESPONSE SWITCH S104 SHOWN IN WIDE POSITION.
5. LINE METER SWITCH S105 SHOWN IN OFF POSITION.
6. REFER TO FIGURES 5-6 AND 5-8, VOLTAGE AND RESISTANCE DIAGRAMS.



18

17

16

15

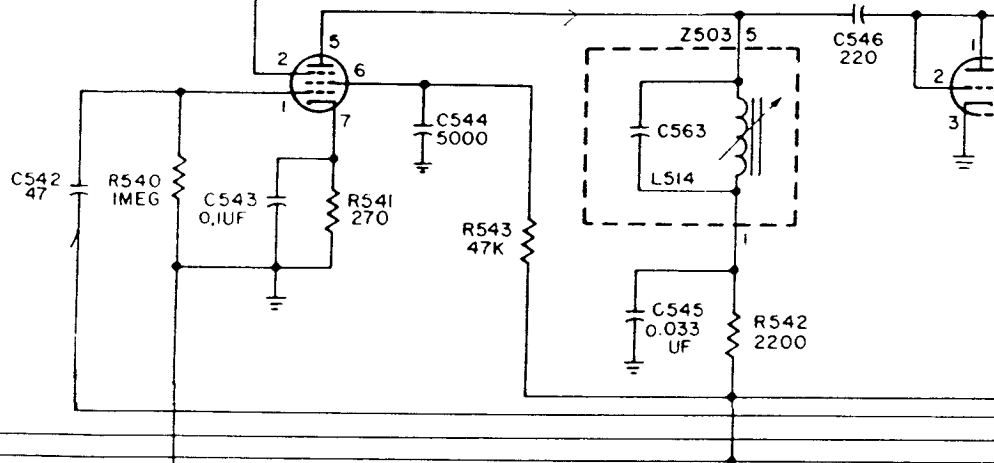
IF SUBCHASSIS

AGC IF AMP
V508
5749/6BA6W

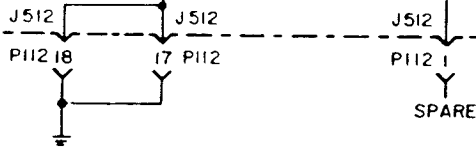
AGC REC
V509
(1/2)5814

IF OUTPUT

SH3
1
2

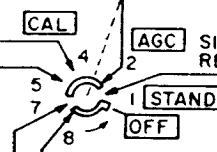
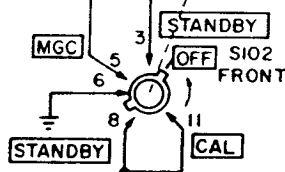
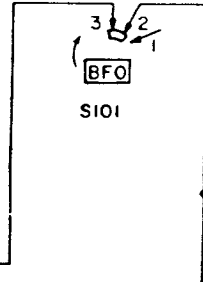


SH3
3 CARRIER LEVEL
4 SWITCHED RF-IF B+ LINE
5 AGC LINE
6 CATHODE BIAS LINE



FUNCTION SEE NOTE 1

ON OFF



SH3
7 BFO ON
8 SWITCHED RF-IF B+ LINE
9
10
11 RF-IF B+ LINE
12 REG + 150V LINE
13

PII9-7
SH2-5C

PI08-J
SH1-8A

PII9-3
SH2-5C

18

17

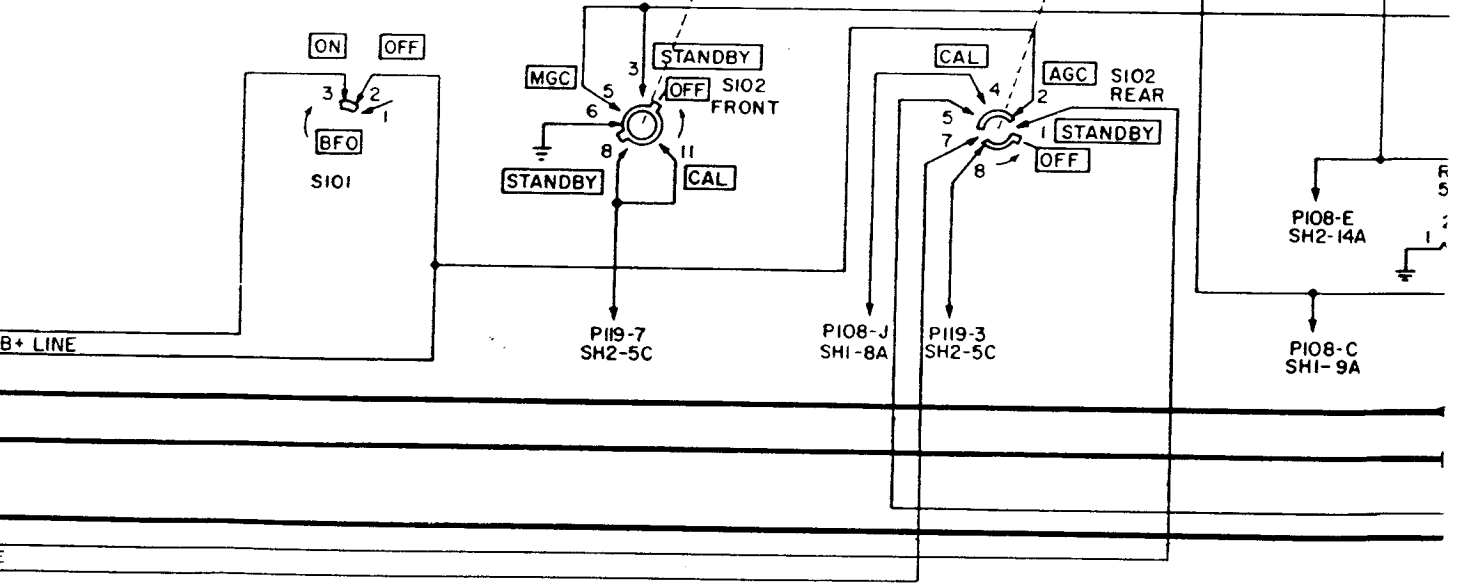
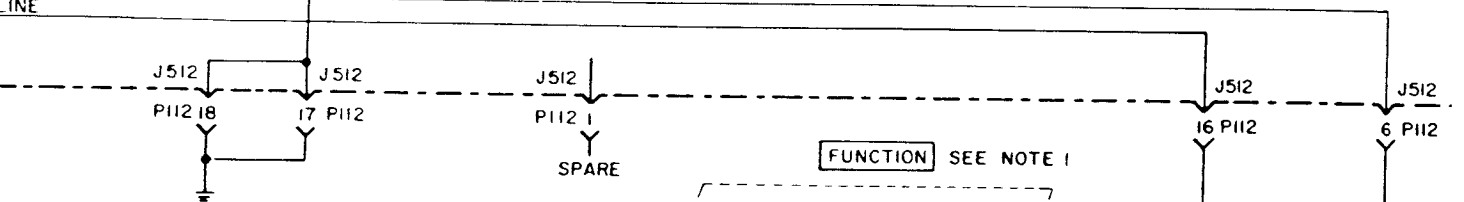
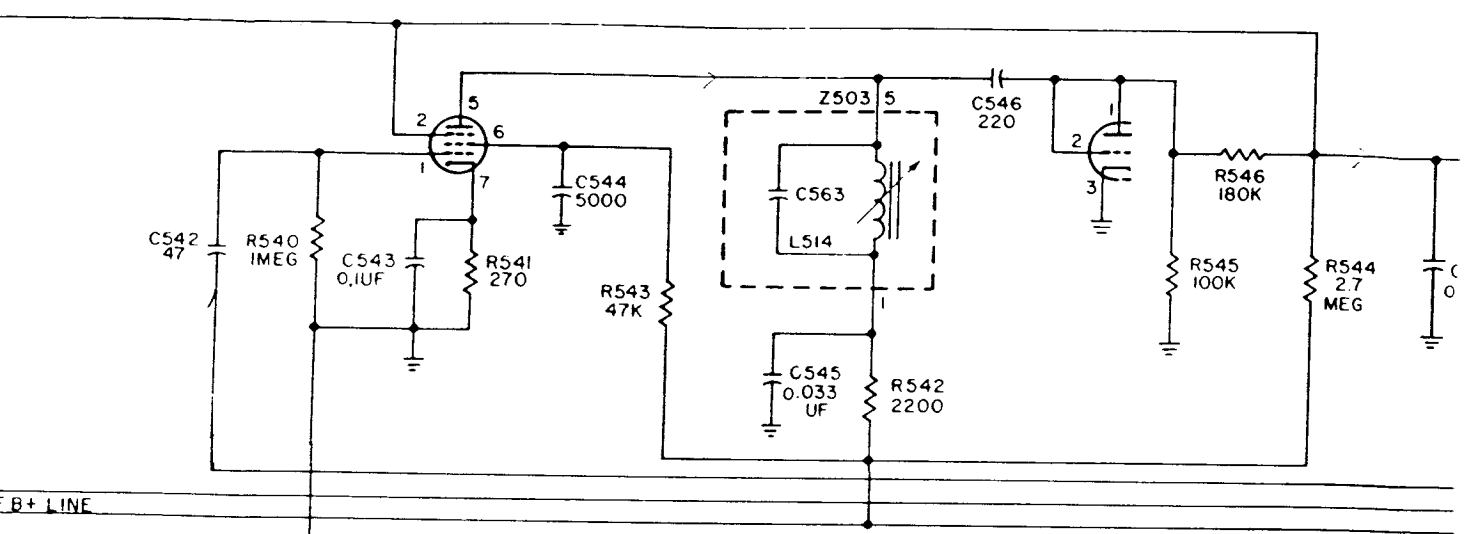
16

15

CHASSIS

AGC IF AMP
V508
5749/6BA6W

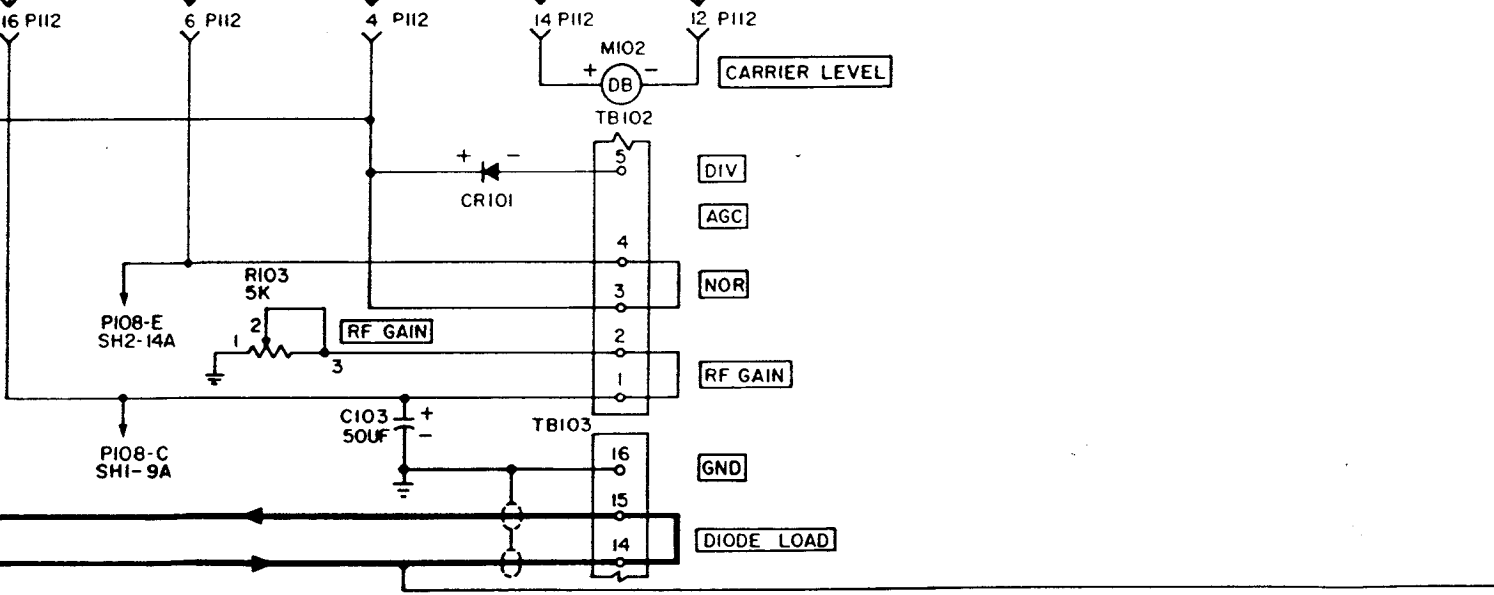
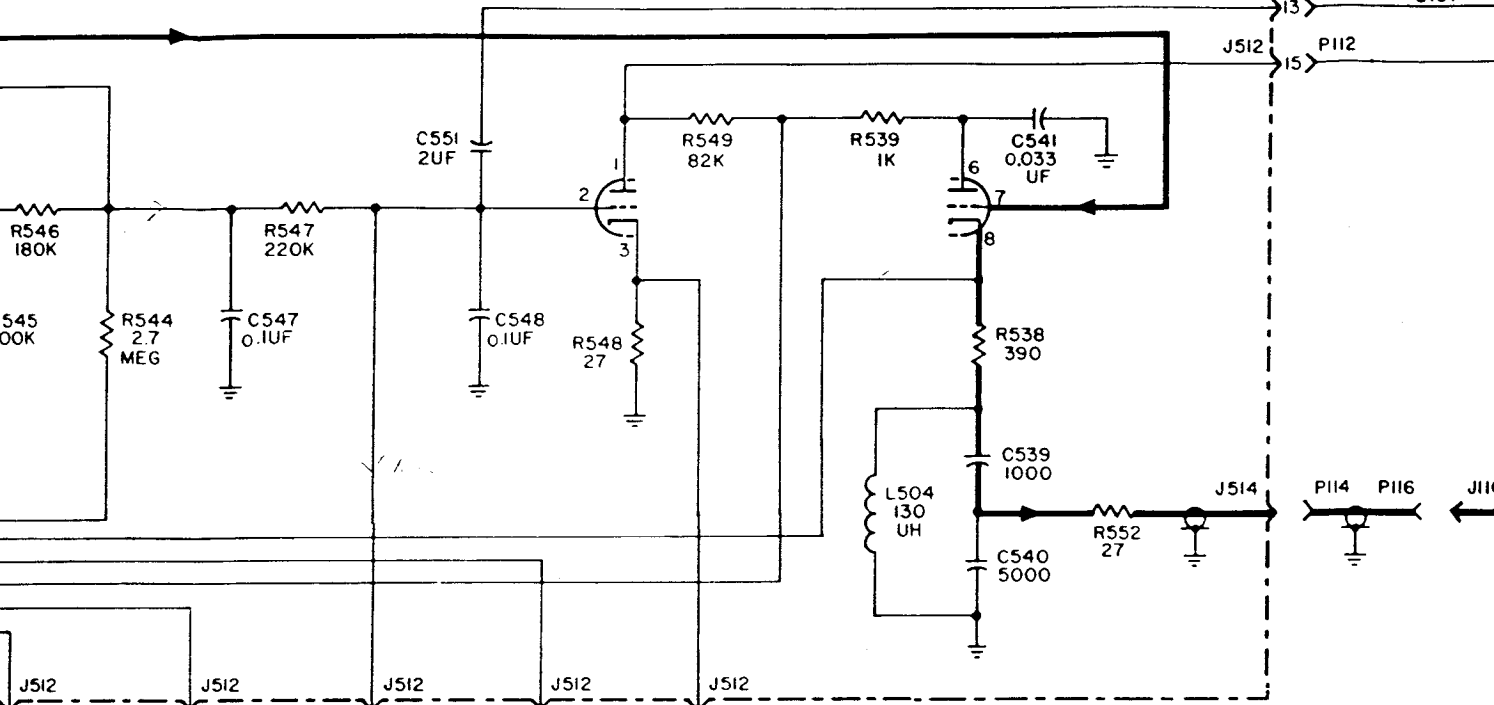
AGC RECTIFIER
V509A
(1/2)5814 A

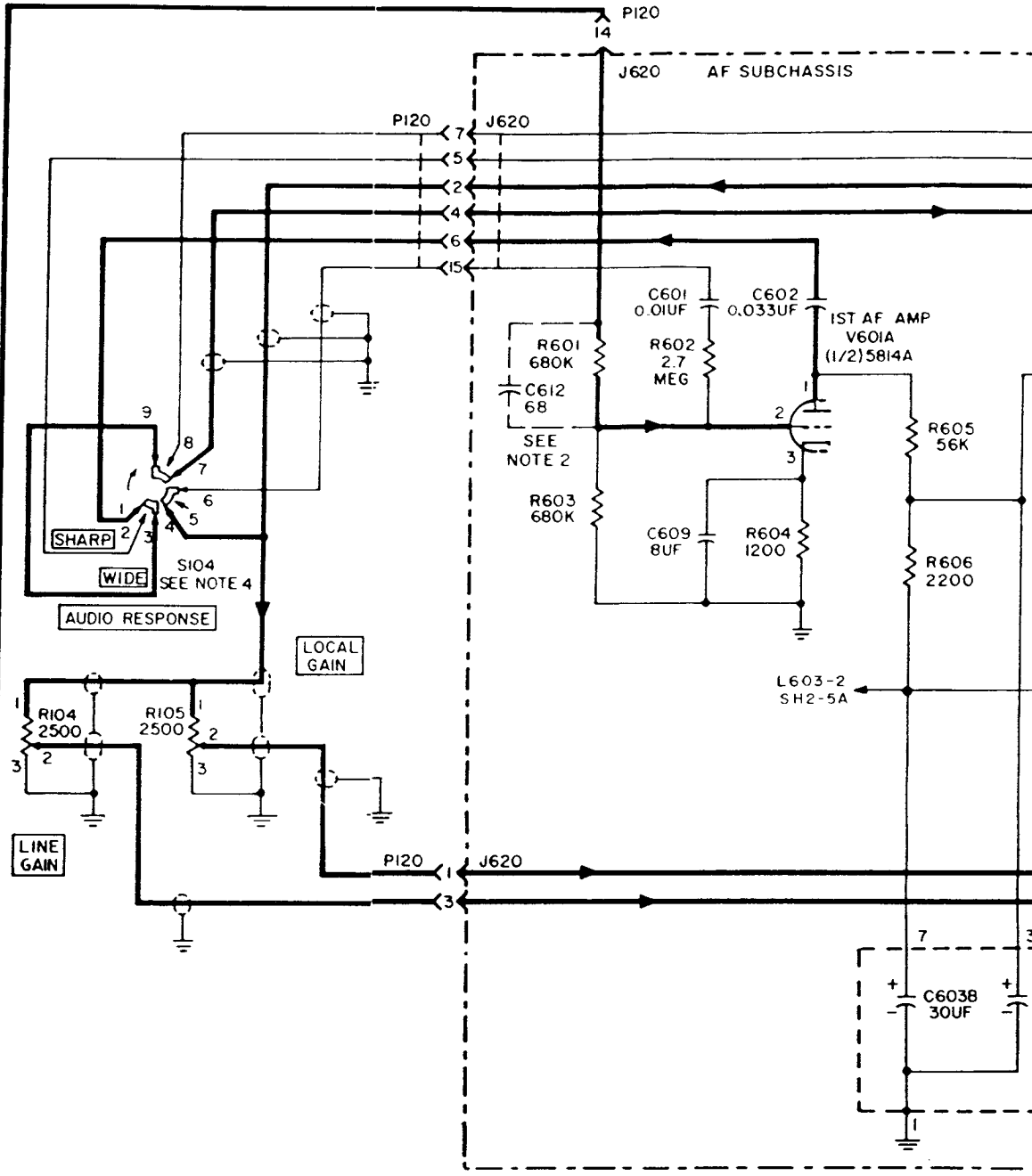
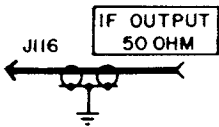
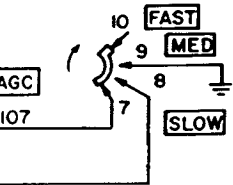


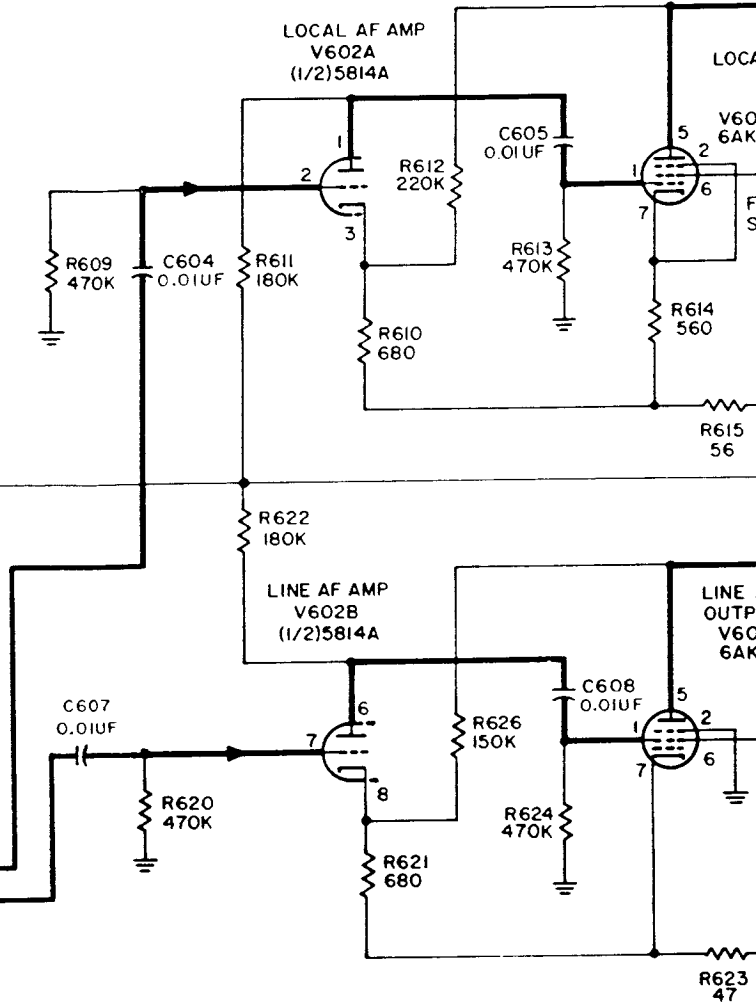
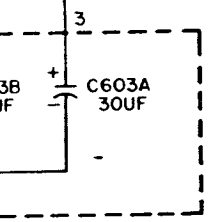
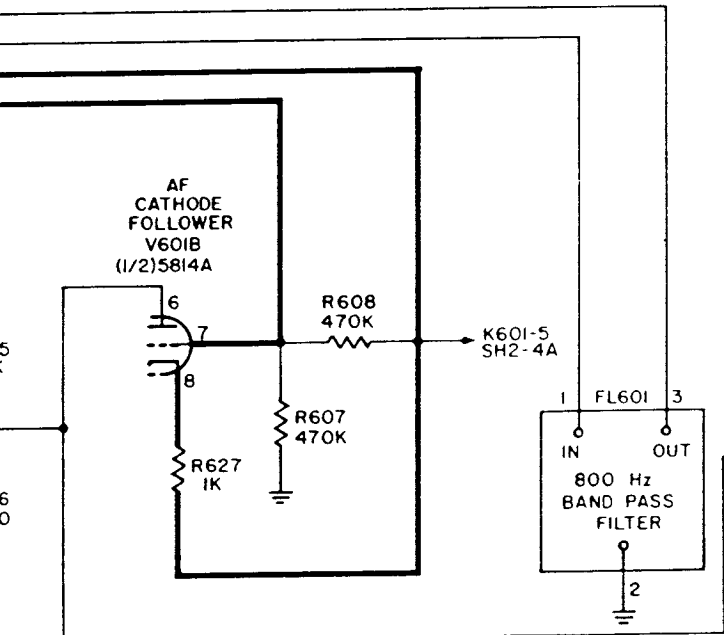
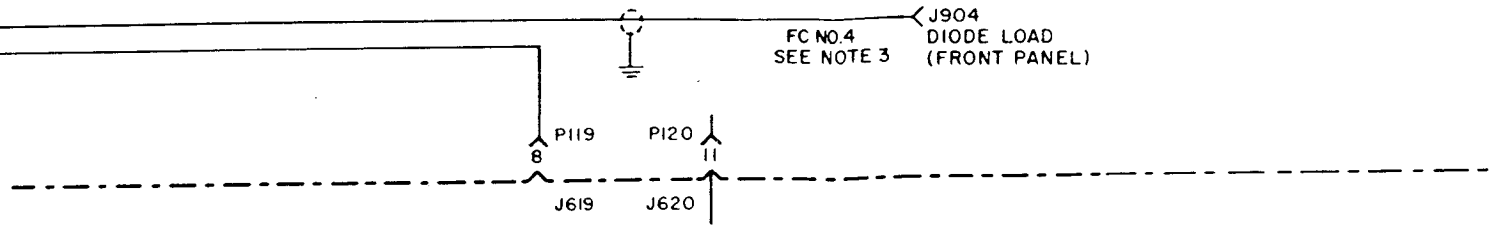
AGC TIME
CONSTANT TUBE
V506A
(1/2) 5814A

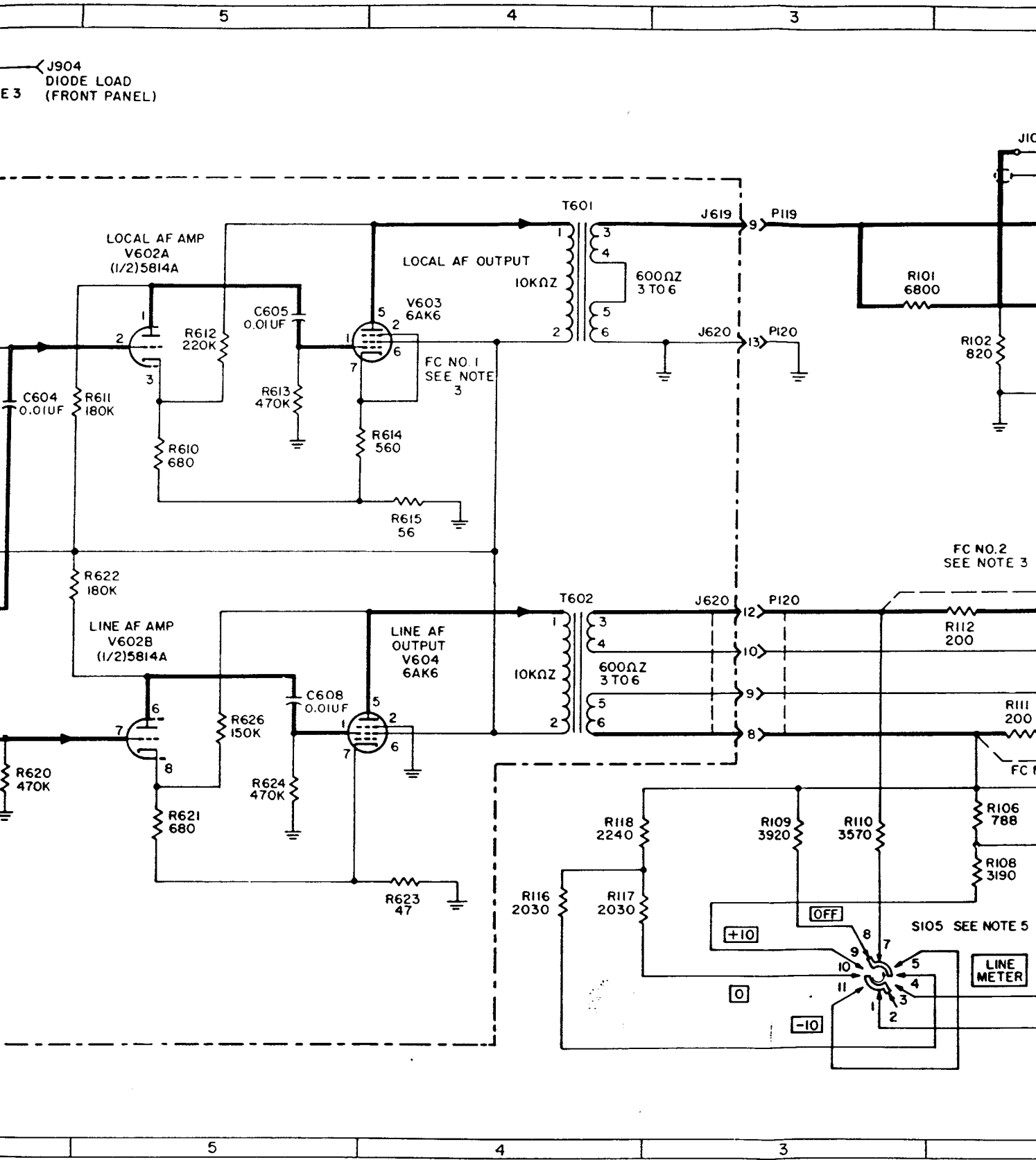
IF CATHODE
FOLLOWER
V509R
(1/2) 5814A

AGC
S107









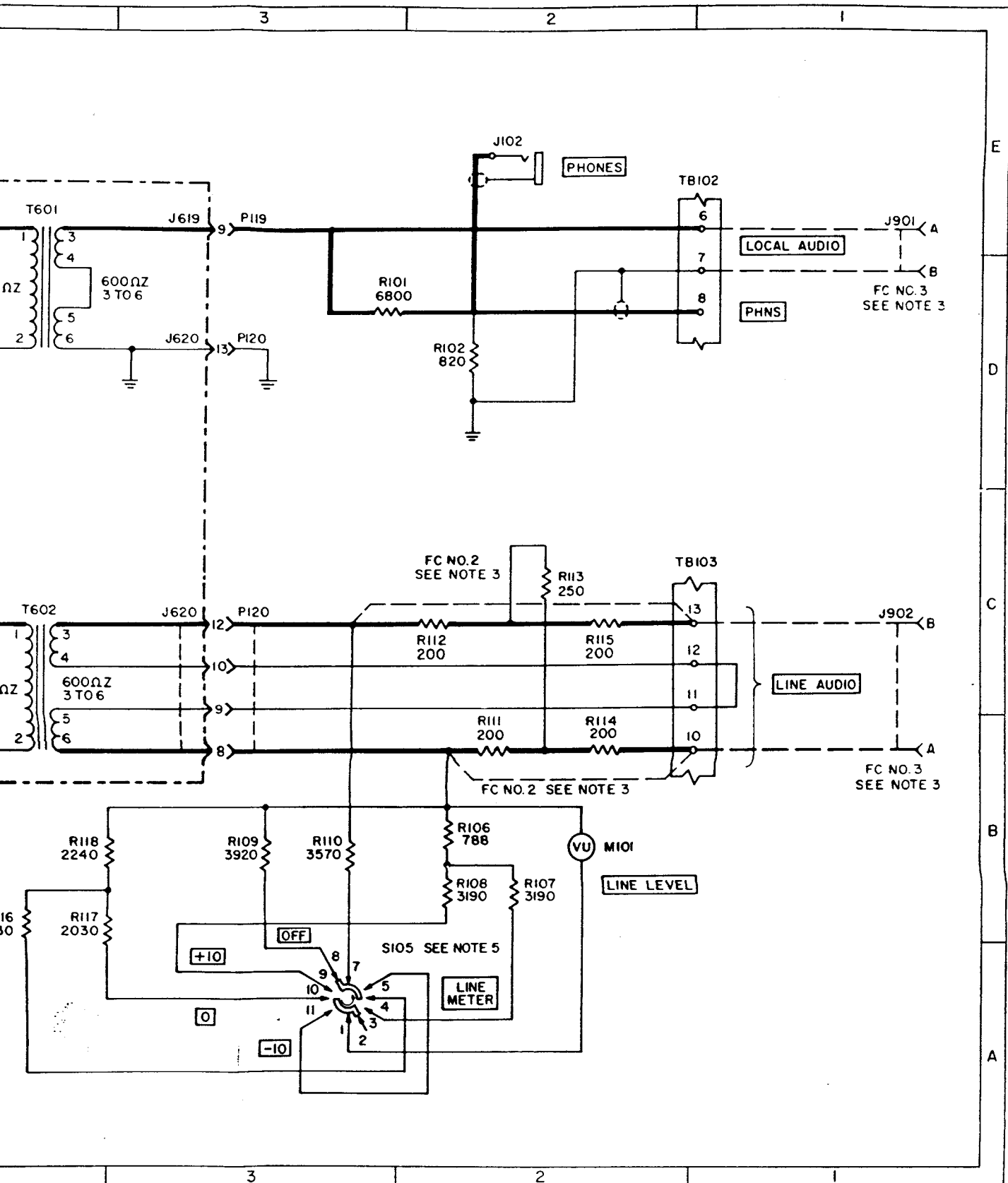


Figure 5-13. Schematic Diagram
(Sheet 4 of 4)